



Corrigendum No. – 1

03-12-2024

Tender Enquiry No- TPSODL/OT/2024-25/042

Work Description - Rate Contract for System Improvement Works under the Elephant Corridor Program, on 'turnkey' basis.

Clause 1.3: Dates in Calendar of events revised as below

(a)	Last Date of receipt of Tender Fee	Not Applicable
(b)	Date & Time of Pre-Bid Meeting (If any)	Not Applicable
(c)	Last Date of receipt of pre-bid queries, if any	Not Applicable
(d)	Last Date of Posting Consolidated replies to all the pre-bid queries as received	Not Applicable
(e)	Last date and time of receipt of Bids	09.12.2024 up to 17:00 Hours
(f)	Date & Time of opening technical bids & EMD	Will be notified to the bidders through our website / e-mail.
(g)	Date & Time of opening of Price of qualified bids	Will be notified to the successful bidders through our website / e-mail.

1. Revised schedule of items (ANNEXURE I) attached and changes has been highlighted in light blue colour.
2. Attached details of M+6 Type Towers

Apart from change in aforesaid clause and calendar of events, all other terms and conditions shall remain unchanged and shall be as per original tender document.

Regards,

Rajkishore Tripathy | Contracts

Mob +91 9437967673 | Web www.tpsouththernodisha.com

TP SOUTHERN ODISHA DISTRIBUTION LIMITED
(A Tata Power and Odisha Government Joint Venture)

2nd Floor| Khodasingi | Ambapua | Berhampur | Odisha - 760 010

Note-This document does not require signature

TP SOUTHERN ODISHA DISTRIBUTION LIMITED

(A Tata Power and Odisha Government Joint Venture)

Corporate office: Kamapalli, Courtpeta, Berhampur, Ganjam, Odisha, India -760 004

Website: www.tpsouthernodisha.com Email : tpsodl@tpsouthernodisha.com

Corporate Identity Number (CIN) : U40300OR2020SGC035195

ANNEXURE I

B/NED DIVISION

SL NO	CAT	Description of Items	UoM	QTY (A)	Supply			Erection			All Inclusive Supply + Erection Rate (Rs.) (F)= (C)+ (E)	
					Unit Supply Price (Rs./ Unit)	GST (Rs./Unit)	Unit Supply Rate including GST (Rs.) (B)	All Inclusive Supply Rate (Rs.) (C) = (A) X (B)	Unit Erection Charge (Rs./ Unit)	GST (Rs./Unit)		Unit Erection Price including GST (Rs.) (D)
1	POLES	8 MTR LONG 200 KG PSC POLE	NO	59								
2		9 MTR LONG 300 KG PSC POLE	NO	2883								
3		10 MTR LONG 330 KG PSC POLE	NO	89								
4		10 MTR LONG 300 KG PSC POLE	NO	66								
5		11 MTR LONG 330 KG PSC POLE	NO	2								
6	CHANNEL & ANGLE	M+6 Tower for river crossing	NO	57								
7		100X50X6 mm MS CHANNEL (9.2 KG / MTR)	KG	8874.3								
8		75x40x6 mm MS CHANNEL (6.8 KG / MTR)	KG	799.68								
9		65X65X6 mm MS ANGLE (5.8 KG / MTR)	KG	194.4								
10		50x50x6 mm MS ANGLE (4.5 KG / MTR)	KG	252								
11	11 KV LINE ACCESSORIES	11KV V Cross arm (10.2 Kg each)	NO	2644								
12		Back clamp for V cross arm 1.2 Kg each	NO	2644								
13		11KV "F" clamp	NO	2644								
14		11 KV 11 kv Disc Insulator(B&S) 90KN PORCELIN	NO	2490								
15		11 KV Hard Ware Fittings(B&S)90 KN 4 BOLT	NO	2292								
16		11 KV Disc Insulator T & C Type	NO	33								
17		11 KV Hardware Fitting T & C Type	NO	21								
18		11 KV Pin Insulator	NO	8937								
19		11 KV GI Pin	NO	8631								
20	H.T STAY ACCESSORIES	H.T. Stay set(Complete)	SET	675								
21		Stay insulator	NO	675								
22		Stay Clamp	NO	675								
23	LT STAY ACCESSORIES	7/10 SWG G.I STAY WIRE	KG	6742								
24		LT Stay set complete	SET	2								
25		7/12 GI stay wire	KG	16								
26	H.T CONDUCTOR	LT Stay Clamp (1.4 KG/Pair)	SET	2								
27		LT Stay Insulator	NO	2								
28		55 Sqmm AAAC Conductor	KM	30.15								
29	LT CABLE AND ACCESSORIES	100 Sqmm AAAC Conductor	KM	7.83								
30		3X50+1X35 MM2 A.B CABLE	KM	5.8								
31		3X35+1X25 MM2 A.B CABLE	KM	5.87								
32		1X35+1X25 MM2 A.B CABLE	KM	8.43								
33		DEAD END CLAMP	NO	78								
34	EARTHING	EYE HOOK	NO	78								
35		POLE CLAMP FOR EYE HOOK	Pair	220								
36		SUSPENSION CLAMP WITH ALUMINIUM ALLOY POLE BRACKET, STAIN LESS STEEL STRAPS AND BUCKELS	Pair	341								
37		11 KV A.B Switch 3pole (200A)	SET	2								
38	11 KV D.P ACCESSORIES	11 KV A.B Switch 3pole (400A) Line AB Switch	Set	2								
39		11 KV H.G fuse 3pole (200A)	SET	5								
40		11 KV Lightning Arrestor(12KV)	NO	12								
41	EARTHING	11 KV A.B Switch 3 pole (H) (400 A)	NO	1								
42		EARTHING COIL FOR SUPPORT	NO	3281								
43		25x4 mm G.I flat for earthing	KG	25								
44		25x6 mm G.I flat for earthing	KG	175								
45		G.I pipe Earthing 40 mm dia medium gauge(3.25mm thick ness) 3 mtr long	NO	16								
46	L T PVC CABLE & DISTRIBUTION BOX	Material for masonry work for earth pit and cement plate cover for earthing with salt & charcoal	NO	16								
47		LT Distribution box for 100KVA S/S	NO	1								
48		LT Distribution box for 25KVA S/S	NO	1								
49		3 1/2 core 150mm ² L.T PVC Cable	MTR	15								
50		3 1/2 core 50 mm ² L.T PVC Cable	MTR	15								
51	CIVIL WORKS	CEMENT CONCRETING OF STAY ANCHOR PLATE WITH C.C 1:3:6 BY USING 4 CM SIZE HARD GRANITE METAL= 0.45MTR*0.45MTR*1.5MTR=0.3037CUM@4158.84=1263.030 R 1270.00	NO	675								
52		Cement concreting of LT Stay	NO	2								
53		CEMENT CONCRETING OF SUPPORT C.C 1:3:6 BY USING 40 MM SIZE HBG METAL= 0.45MTR*0.45MTR*1.5MTR=0.3037CUM@4158.84=1263.030 R 1270.00	NO	2971								
54		Concrete slab for base place size 2ftx2ftx2" thickness for each Psc Pole	NO	123								
55	11 KV XLPE Covered Conductor Accessories	Base Plate	NO	1696								
56		11 KV XLPE 100 MM2 INSULATED AAA CONDUCTOR	KM	484.02								
57		Dead End Clamp 11kv	EA	3888								
58		JT KIT 11KV END TERM F/ 1X100 SQMM	EA	972								
59		IPC for 100sqmm	EA	3888								
60		CONNECTOR MECHANICAL FOR 100SQMM COND.	EA	3888								
61		Cap cable end	EA	3888								
62		Tie for alignment 11kv	EA	11178								
63		MS NUT-BOLT-WASHER	KG	3487								
64		SUNDRIES	LS	177								
65	Guarding(Box Type)	No	6									
66	P.G Clamp/Jumpering cone(100 mm2)	No	342									
67	Stud Pole Clamp	No	14									
Total All Inclusive Value (Rs.)												

ANNEXURE I
PED DIVISION

SL NO	Description of Items	UoM	Supply				Erection				All Inclusive Supply + Erection Rate (Rs.) (F)= (C)+ (E)	
			QTY (A)	Unit Supply Price (Rs./ Unit)	GST (Rs/Unit)	Unit Supply Rate including GST (Rs.) (B)	All Inclusive Supply Rate (Rs.) (C) = (A) X (B)	Unit Erection Charge (Rs./ Unit)	GST (Rs/Unit)	Unit Erection Price including GST (Rs.) (D)		All Inclusive Erection Price (Rs.) (E) = (A) X (D)
1	9mtr long 300Kg PSC pole	Nos.	758									
2	11KV 'V' Cross Arm 10.2kg Each	Kg.	758									
3	Back Clamp	Kg.	758									
4	F-Clamp	Kg.	758									
5	11KV Pin Insulator	Kg.	2274									
6	11KV G.I Pin	Kg.	2274									
7	HT Stay set (Complete)	Nos.	105									
8	Stay Insulator	Nos.	105									
9	Stay Clamp	Pair	105									
10	7/10 GI stay wire	Kg.	791									
11	Earthing support coil type	Kg.	758									
12	Concreting of stay CC 1:3:6 using 40MM HBG metal=0.45 mtrx045x1.5mtr=0.3037 Cum	Nos.	105									
13	Coccreting of support CC 1:3:6 using 40MM HBG metal=0.45 mtrx045x1.5mtr=0.3037 Cum	Nos.	758									
14	MS Nut, Bolt and Washer	Kg.	720									
15	Sundries	LS	18									
			Total All Inclusive Value (Rs.)									

BILL OF MATERIALS FOR 33KV "M+6" TOWER

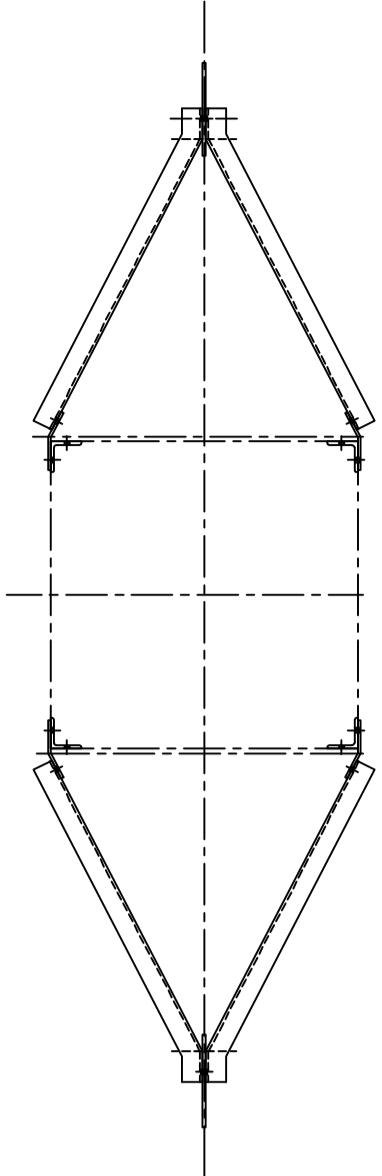
SL. NO.	ERECTION MARK	SECTION (mm)	LENGTH (MM)	PLATE WIDTH (MM)	QTY/ SET (NOS)	U.WT. (KG/ MTR)	WT./ PCS (KGS)	TOTAL WT./ SET (IN KGS)	REMARK
1	M6- 1	L150x150x16	4000		4	35.80	143.200	572.800	STUB LEG
2	M6- 2	L50x50x6	680		8	4.50	3.060	24.480	B/ C
3	M6- 3	L100x100x8	3000		4	12.10	36.300	145.200	LEG
4	M6- 4	L75x75x8	3190		2	8.90	28.391	56.782	LEG
5	M6- 5	L75x75x8	3190		2	8.90	28.391	56.782	LEG
6	M6- 6	L75x75x8	2908		2	8.90	25.881	51.762	LEG
7	M6- 7	L75x75x8	2908		2	8.90	25.881	51.762	LEG
8	M6- 11	L75x75x8	360		4	8.90	3.204	12.816	H.G, CLEAT
9	M6- 12	8MM PLT	360	75	8	62.80	1.696	13.568	COVER PLT
10	M6- 13	L75x75x8	256		4	8.90	2.278	9.112	H.G, CLEAT
11	M6- 14	8MM PLT	256	75	8	62.80	1.206	9.648	COVER PLT
12	M6- 15	L50x50x6	1232		16	4.50	5.544	88.704	----
13	M6- 15A	L50x50x6	1232		4	4.50	5.544	22.176	N/ C, B/ C, C/ T
14	M6- 15X	L50x50x6	1232		12	4.50	5.544	66.528	B/ C
15	M6- 16	L50x50x6	1240		4	4.50	5.580	22.320	----
16	M6- 16X	L50x50x6	1240		4	4.50	5.580	22.320	B/ C, C/ T
17	M6- 17	L50x50x6	1248		4	4.50	5.616	22.464	----
18	M6- 17X	L50x50x6	1248		4	4.50	5.616	22.464	N/ C, B/ C, C/ T
19	M6- 18	L50x50x6	1211		2	4.50	5.450	10.900	----
20	M6- 18X	L50x50x6	1211		2	4.50	5.450	10.900	N/ C, B/ C, C/ T
21	M6- 19	L50x50x6	1170		2	4.50	5.265	10.530	----
22	M6- 19X	L50x50x6	1170		2	4.50	5.265	10.530	N/ C, B/ C, C/ T
23	M6- 20	L50x50x6	710		2	4.50	3.195	6.390	----
24	M6- 21	L50x50x6	850		2	4.50	3.825	7.650	----
25	M6- 22L	L50x50x6	1195		2	4.50	5.378	10.756	BEND
26	M6- 22R	L50x50x6	1195		2	4.50	5.378	10.756	BEND
27	M6- 23L	L50x50x6	877		2	4.50	3.947	7.894	BEND, C/ T
28	M6- 23R	L50x50x6	877		2	4.50	3.947	7.894	BEND, C/ T
29	M6- 24	8MM PLT	227	102	2	62.80	1.454	2.908	D/ C
30	M6- 25L	6MM PLT	145	100	2	47.10	0.683	1.366	BEND, D/ C
31	M6- 25R	6MM PLT	145	100	2	47.10	0.683	1.366	BEND, D/ C
32	M6- 26	L50x50x6	955		1	4.50	4.298	4.298	N/ C,F/ C,C/ T
33	M6- 26X	L50x50x6	955		1	4.50	4.298	4.298	N/ C,B/ C,C/ T
34	M6- 27	10MM PLT	340	150	6	78.50	4.004	24.024	D/ C
35	M6- 28	L50x50x6	994		2	4.50	4.473	8.946	----
36	M6- 28X	L50x50x6	994		2	4.50	4.473	8.946	N/ C, B/ C,C/ T
37	M6- 29	L50x50x6	1034		2	4.50	4.653	9.306	----
38	M6- 29X	L50x50x6	1034		2	4.50	4.653	9.306	N/ C, B/ C,C/ T
39	M6- 30	L50x50x6	1030		2	4.50	4.635	9.270	B/ C
40	M6- 30X	L50x50x6	1030		2	4.50	4.635	9.270	N/ C, B/ C,C/ T

BILL OF MATERIALS FOR 33KV "M+6" TOWER

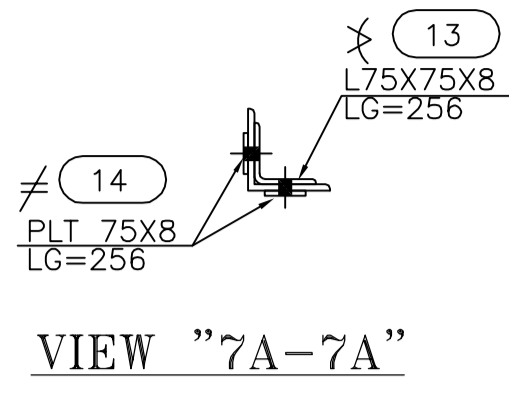
SL. NO.	ERECTION MARK	SECTION (mm)	LENGTH (MM)	PLATE WIDTH (MM)	QTY/ SET (NOS)	U.WT. (KG/ MTR)	WT./ PCS(KGS)	TOTAL WT./ SET (IN KGS)	REMARK
41	M6- 31	L50x50x6	998		2	4.50	4.491	8.982	----
42	M6- 31X	L50x50x6	998		2	4.50	4.491	8.982	N/ C,B/ C,C/ T
43	M6- 32	L50x50x6	720		4	4.50	3.240	12.960	----
44	M6- 33	L50x50x6	850		4	4.50	3.825	15.300	----
45	M6- 34L	L50x50x6	1195		4	4.50	5.378	21.512	BEND
46	M6- 34R	L50x50x6	1195		4	4.50	5.378	21.512	BEND
47	M6- 35L	L50x50x6	877		4	4.50	3.947	15.788	BEND
48	M6- 35R	L50x50x6	877		4	4.50	3.947	15.788	BEND
49	M6- 36	8MM PLT	227	102	4	62.80	1.454	5.816	D/ C
50	M6- 37L	6MM PLT	140	100	4	47.10	0.659	2.636	D/ C, BEND
51	M6- 37R	6MM PLT	140	100	4	47.10	0.659	2.636	D/ C, BEND
52	M6- 38	L50x50x6	955		2	4.50	4.298	8.596	N/ C,F/ C,C/ T
53	M6- 38X	L50x50x6	955		2	4.50	4.298	8.596	N/ C,B/ C,C/ T
54	M6- 39	L50x50x6	987		2	4.50	4.442	8.884	----
55	M6- 39X	L50x50x6	987		2	4.50	4.442	8.884	N/ C,B/ C,C/ T
56	M6- 40	L50x50x6	1045		2	4.50	4.703	9.406	----
57	M6- 40X	L50x50x6	1045		2	4.50	4.703	9.406	N/ C,B/ C,C/ T
58	M6- 41	L50x50x6	1023		2	4.50	4.604	9.208	B/ C
59	M6- 41X	L50x50x6	1023		2	4.50	4.604	9.208	N/ C,B/ C,C/ T
60	M6- 42	L50x50x6	1008		2	4.50	4.536	9.072	----
61	M6- 42X	L50x50x6	1008		2	4.50	4.536	9.072	N/ C,B/ C,C/ T
62	M6- 43	L50x50x6	720		2	4.50	3.240	6.480	----
63	M6- 44	L50x50x6	720		2	4.50	3.240	6.480	B/ C
64	M6- 45	L150x150x12	2994		4	27.30	81.736	326.944	LEG
65	M6- 46	L150x150x12	2994		4	27.30	81.736	326.944	LEG
66	M6- 48	L130x130x10	460		4	19.70	9.062	36.248	H.G , CLEAT
67	M6- 49	10MM PLT	460	125	4	78.50	4.514	18.056	----
68	M6- 49A	10MM PLT	460	125	4	78.50	4.514	18.056	D/ C
69	M6- 50	4MM PLT	227	60	8	31.40	0.428	3.424	----
70	M6- 51	L130x130x10	460		4	19.70	9.062	36.248	H.G , CLEAT
71	M6- 52	10MM PLT	460	125	4	78.50	4.514	18.056	----
72	M6- 52A	10MM PLT	460	125	4	78.50	4.514	18.056	D/ C
73	M6- 56	L130x130x10	460		4	19.70	9.062	36.248	H.G , CLEAT
74	M6- 57	10MM PLT	460	125	4	78.50	4.514	18.056	----
75	M6- 57A	10MM PLT	460	125	4	78.50	4.514	18.056	D/ C
76	M6- 58	4MM PLT	227	60	8	31.40	0.428	3.424	----
77	M6- 59	L50x50x6	1232		4	4.50	5.544	22.176	----
78	M6- 59X	L50x50x6	1232		4	4.50	5.544	22.176	N/ C,B/ C
79	M6- 60	L50x50x6	1232		20	4.50	5.544	110.880	----
80	M6- 60X	L50x50x6	1232		20	4.50	5.544	110.880	B/ C

BILL OF MATERIALS FOR 33KV "M+6" TOWER

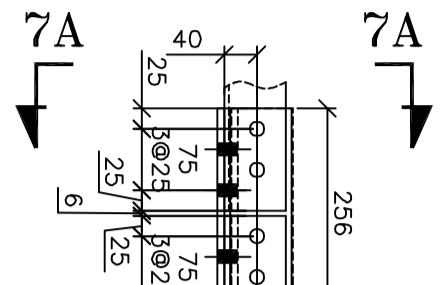
SL. NO.	ERECTION MARK		SECTION (mm)	LENGTH (MM)	PLATE WIDTH (MM)	QTY/ SET (NOS)	U.WT. (KG/ MTR)	WT./ PCS(KGS)	TOTAL WT./ SET (IN KGS)	REMARK
81	M6-	61	FLAT 50X6	680		1	2.40	1.632	1.632	
82	M6-	62	FLAT 50X6	680		1	2.40	1.632	1.632	
83	M6-	63	FLAT 50X6	680		1	2.40	1.632	1.632	
TOTAL WEIGHT IN KG:-									2843.220	
BOLTS AND NUTS										
BOLTS AND NUTS		M16X35					0.117	36	4.212	
BOLTS AND NUTS		M16X40					0.125	100	12.500	
BOLTS AND NUTS		M16X45					0.133	219	29.127	
BOLTS AND NUTS		M16X50					0.141	156	21.996	
BOLTS AND NUTS		M16X55					0.149	204	30.396	
BOLTS AND NUTS		M16X60					0.157	64	10.048	
Spring Washers		M16X3.5					0.009	779	7.011	
Plain Washer		M16					0.011	779	8.569	
TOTAL WEIGHT OF BOLTS & NUTS (B) =									123.859	
PACK WASHERS										
Pack Washer		M16X6					0.033	3	0.099	
Pack Washer		M16X8					0.044	48	2.112	
Pack Washer		M16X10					0.056	16	0.896	
Pack Washer		M16X12					0.067	28	1.876	
TOTAL WEIGHT OF PACK WASHER (C)=									4.983	



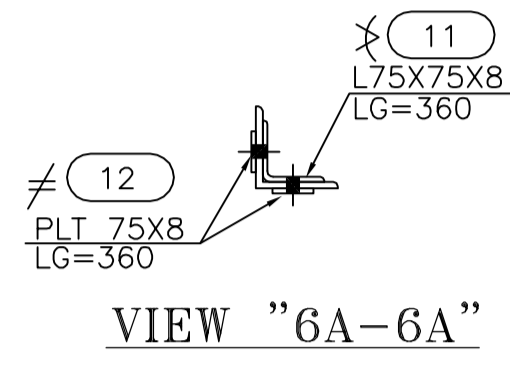
VIEW "M-M"



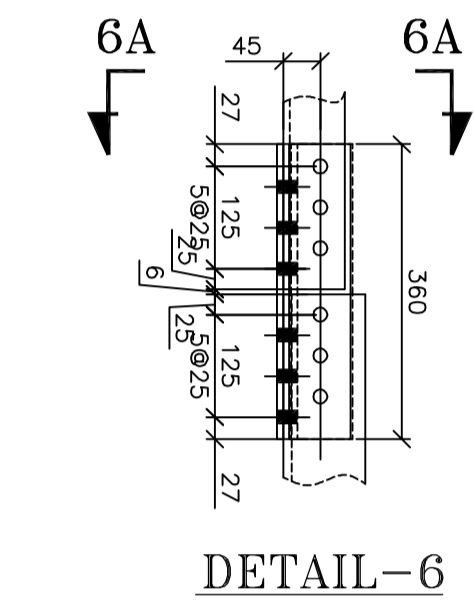
VIEW "7A-7A"



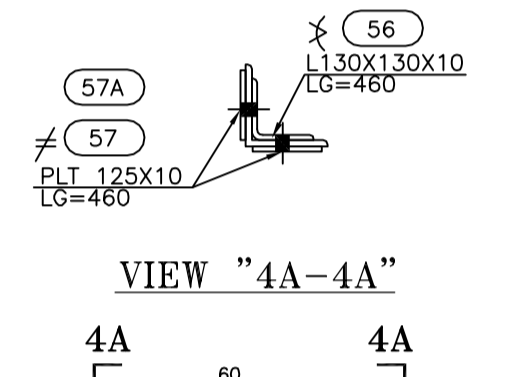
DETAIL-7



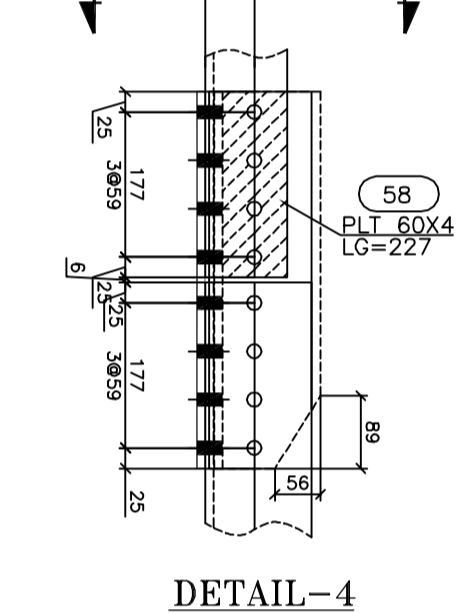
VIEW "6A-6A"



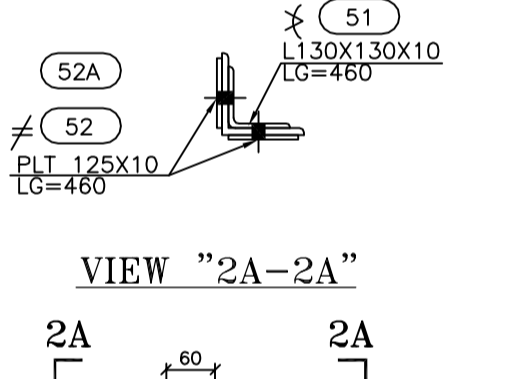
DETAIL-6



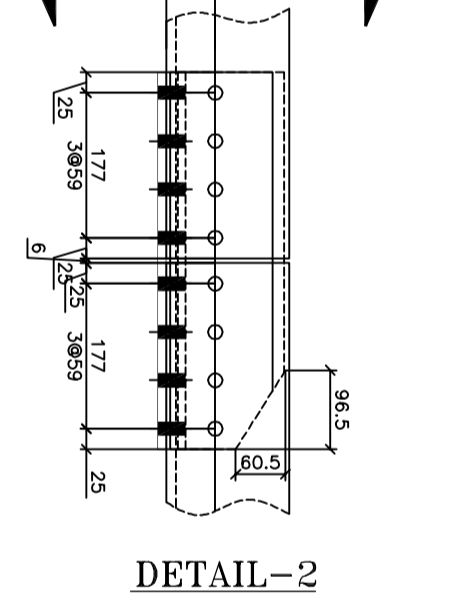
VIEW "4A-4A"



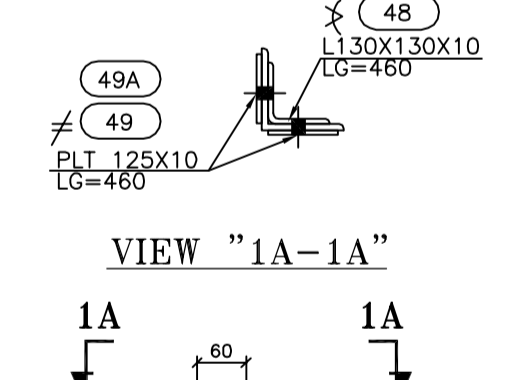
DETAIL-4



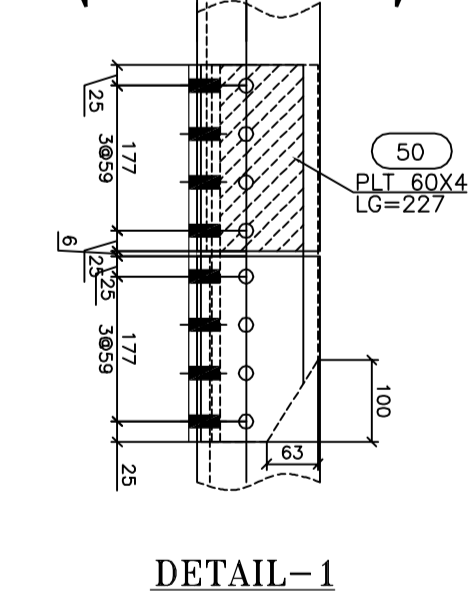
VIEW "2A-2A"



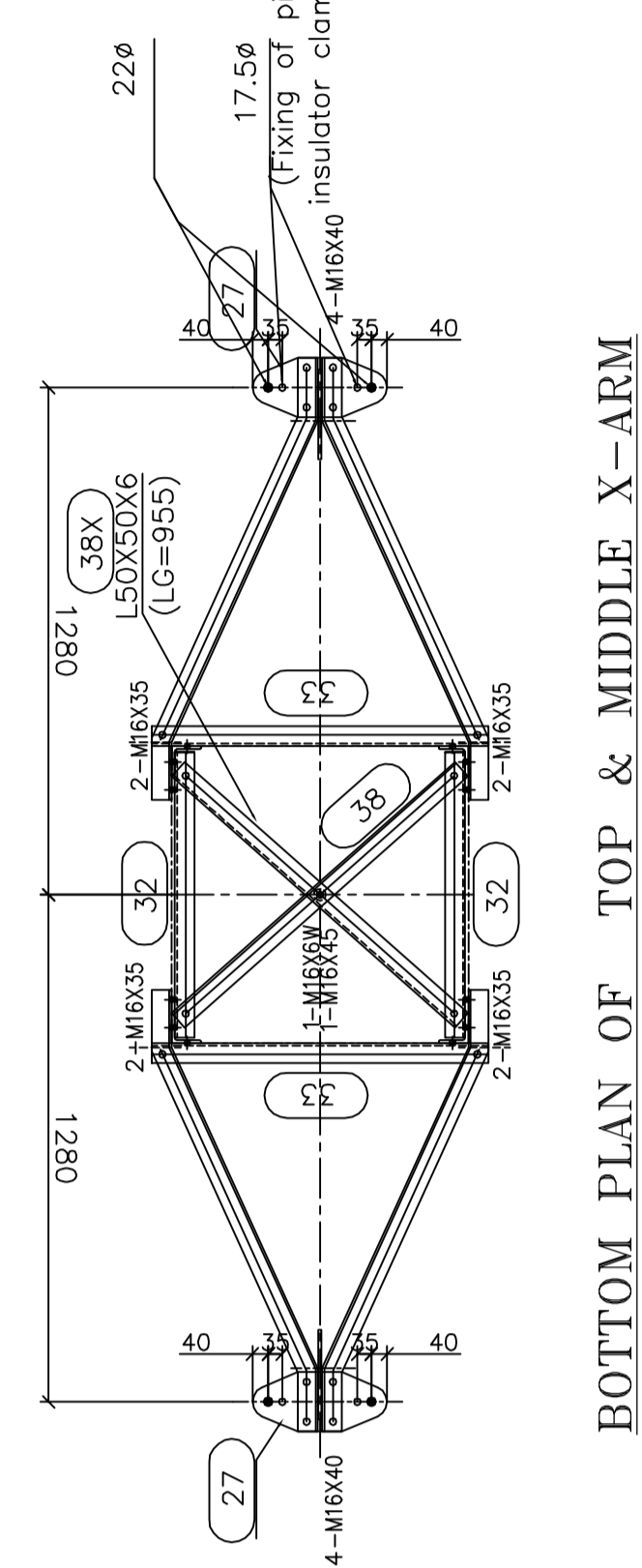
DETAIL-2



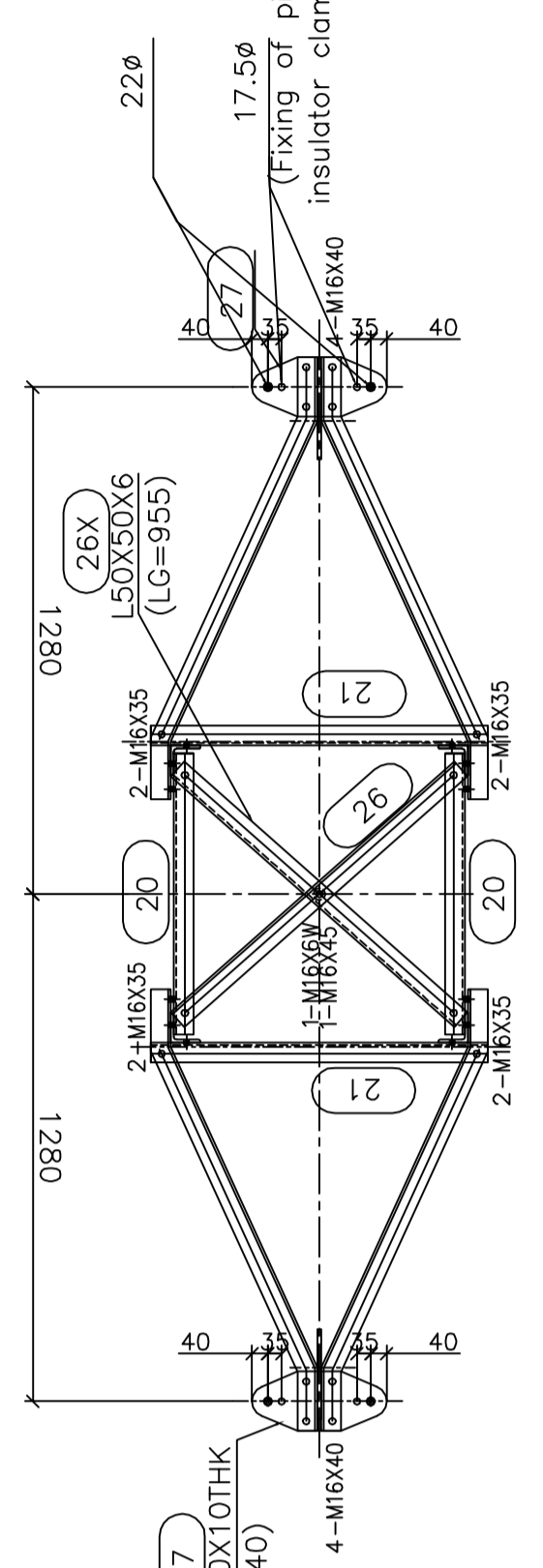
VIEW "1A-1A"



DETAIL-1



BOTTOM PLAN OF TOP & MIDDLE X-ARM

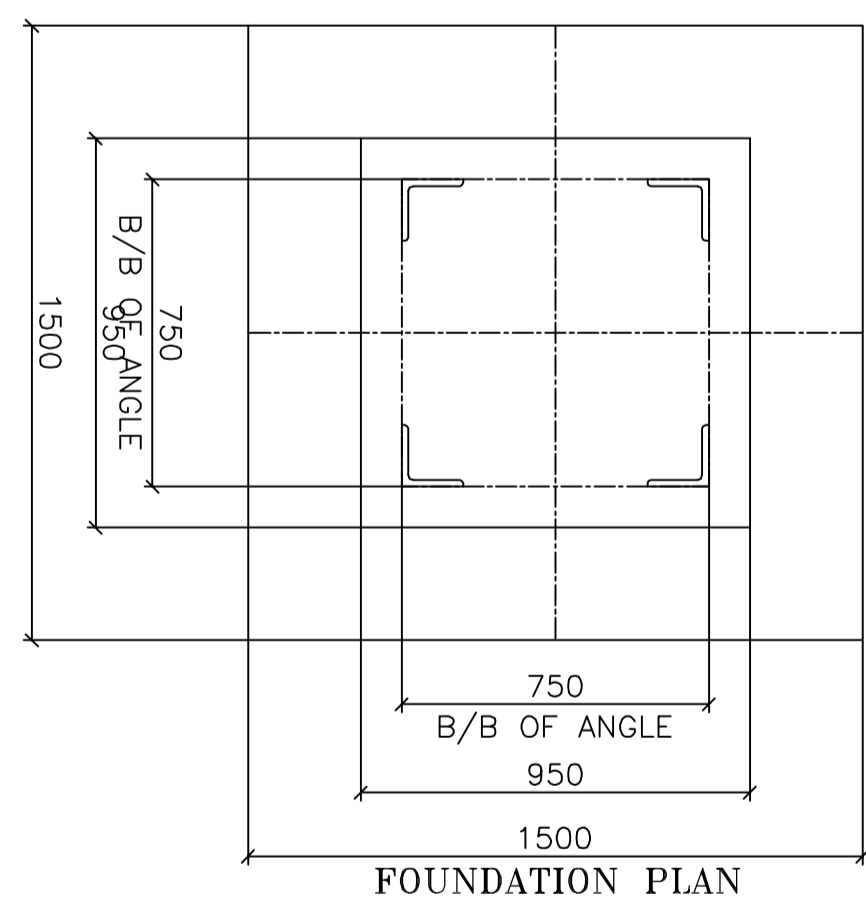


BOTTOM PLAN OF BOTTOM X-ARM

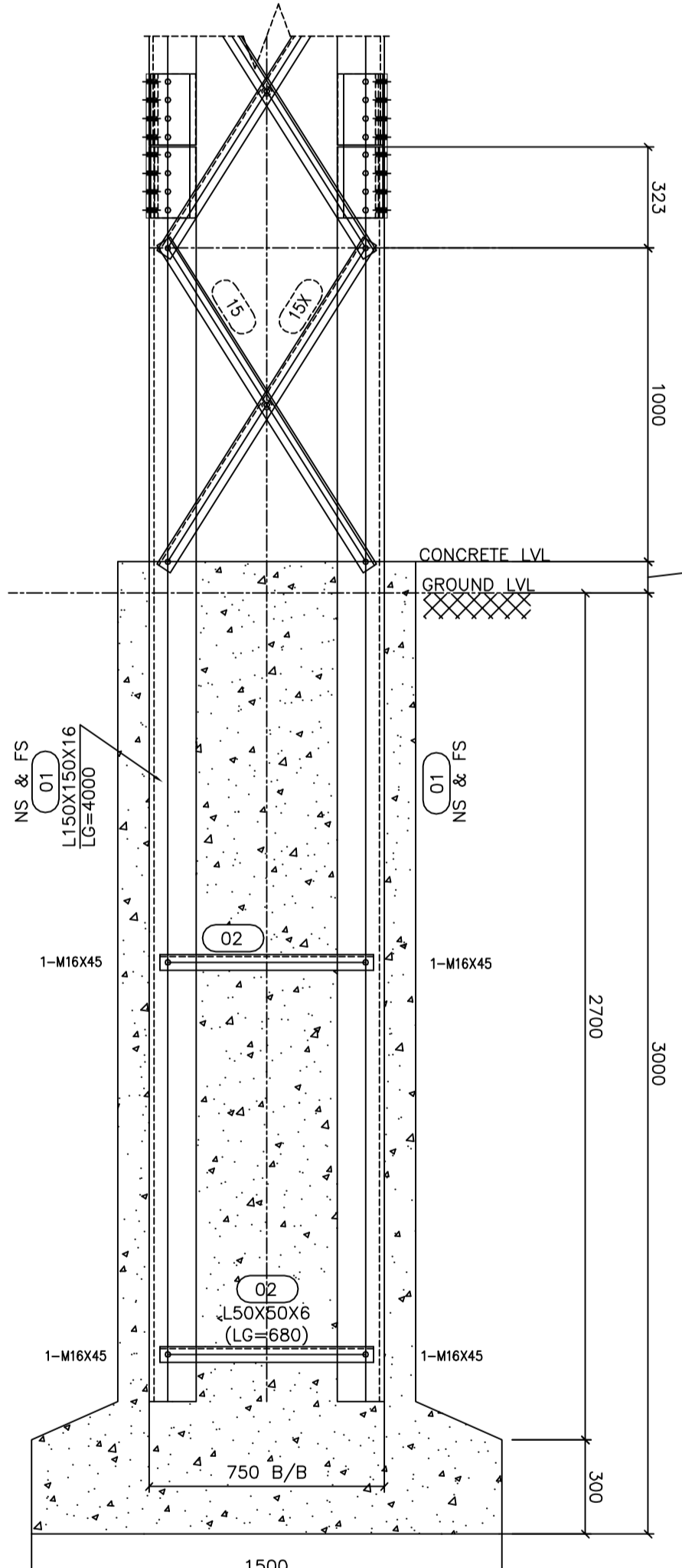
RODS & NUTS SUPPLEMENT		TOTAL QTY
SIZE (Length in mm)		
M16 x 30 mm	36	36
M16 x 40 mm	100	100
M16 x 50 mm	102	102
M16 x 60 mm	102	102
M16 x 70 mm	102	102
M16 x 80 mm	102	102
M16 x 90 mm	102	102
M16 x 100 mm	102	102
M16 x 110 mm	102	102
M16 x 120 mm	102	102
M16 x 130 mm	102	102
M16 x 140 mm	102	102
M16 x 150 mm	102	102
M16 x 160 mm	102	102
M16 x 170 mm	102	102
M16 x 180 mm	102	102
M16 x 190 mm	102	102
M16 x 200 mm	102	102
M16 x 210 mm	102	102
M16 x 220 mm	102	102
M16 x 230 mm	102	102
M16 x 240 mm	102	102
M16 x 250 mm	102	102
M16 x 260 mm	102	102
M16 x 270 mm	102	102
M16 x 280 mm	102	102
M16 x 290 mm	102	102
M16 x 300 mm	102	102
M16 x 310 mm	102	102
M16 x 320 mm	102	102
M16 x 330 mm	102	102
M16 x 340 mm	102	102
M16 x 350 mm	102	102
M16 x 360 mm	102	102
M16 x 370 mm	102	102
M16 x 380 mm	102	102
M16 x 390 mm	102	102
M16 x 400 mm	102	102
M16 x 410 mm	102	102
M16 x 420 mm	102	102
M16 x 430 mm	102	102
M16 x 440 mm	102	102
M16 x 450 mm	102	102
M16 x 460 mm	102	102
M16 x 470 mm	102	102
M16 x 480 mm	102	102
M16 x 490 mm	102	102
M16 x 500 mm	102	102
M16 x 510 mm	102	102
M16 x 520 mm	102	102
M16 x 530 mm	102	102
M16 x 540 mm	102	102
M16 x 550 mm	102	102
M16 x 560 mm	102	102
M16 x 570 mm	102	102
M16 x 580 mm	102	102
M16 x 590 mm	102	102
M16 x 600 mm	102	102
M16 x 610 mm	102	102
M16 x 620 mm	102	102
M16 x 630 mm	102	102
M16 x 640 mm	102	102
M16 x 650 mm	102	102
M16 x 660 mm	102	102
M16 x 670 mm	102	102
M16 x 680 mm	102	102
M16 x 690 mm	102	102
M16 x 700 mm	102	102
M16 x 710 mm	102	102
M16 x 720 mm	102	102
M16 x 730 mm	102	102
M16 x 740 mm	102	102
M16 x 750 mm	102	102
M16 x 760 mm	102	102
M16 x 770 mm	102	102
M16 x 780 mm	102	102
M16 x 790 mm	102	102
M16 x 800 mm	102	102
M16 x 810 mm	102	102
M16 x 820 mm	102	102
M16 x 830 mm	102	102
M16 x 840 mm	102	102
M16 x 850 mm	102	102
M16 x 860 mm	102	102
M16 x 870 mm	102	102
M16 x 880 mm	102	102
M16 x 890 mm	102	102
M16 x 900 mm	102	102
M16 x 910 mm	102	102
M16 x 920 mm	102	102
M16 x 930 mm	102	102
M16 x 940 mm	102	102
M16 x 950 mm	102	102
M16 x 960 mm	102	102
M16 x 970 mm	102	102
M16 x 980 mm	102	102
M16 x 990 mm	102	102
M16 x 1000 mm	102	102

RODS & NUTS SUPPLEMENT		TOTAL QTY
SIZE (Length in mm)		
M16 x 30 mm	36	36
M16 x 40 mm	100	100
M16 x 50 mm	102	102
M16 x 60 mm	102	102
M16 x 70 mm	102	102
M16 x 80 mm	102	102
M16 x 90 mm	102	102
M16 x 100 mm	102	102
M16 x 110 mm	102	102
M16 x 120 mm	102	102
M16 x 130 mm	102	102
M16 x 140 mm	102	102
M16 x 150 mm	102	102
M16 x 160 mm	102	102
M16 x 170 mm	102	102
M16 x 180 mm	102	102
M16 x 190 mm	102	102
M16 x 200 mm	102	102
M16 x 210 mm	102	102
M16 x 220 mm	102	102
M16 x 230 mm	102	102
M16 x 240 mm	102	102
M16 x 250 mm	102	102
M16 x 260 mm	102	102
M16 x 270 mm	102	102
M16 x 280 mm	102	102
M16 x 290 mm	102	102
M16 x 300 mm	102	102
M16 x 310 mm	102	102
M16 x 320 mm	102	102
M16 x 330 mm	102	102
M16 x 340 mm	102	102
M16 x 350 mm	102	102
M16 x 360 mm	102	102
M16 x 370 mm	102	102
M16 x 380 mm	102	102
M16 x 390 mm	102	102
M16 x 400 mm	102	102
M16 x 410 mm	102	102
M16 x 420 mm	102	102
M16 x 430 mm	102	102
M16 x 440 mm	102	102
M16 x 450 mm	102	102
M16 x 460 mm	102	102
M16 x 470 mm	102	102
M16 x 480 mm	102	102
M16 x 490 mm	102	102
M16 x 500 mm	102	102
M16 x 510 mm	102	102
M16 x 520 mm	102	102
M16 x 530 mm	102	102
M16 x 540 mm	102	102
M16 x 550 mm	102	102
M16 x 560 mm	102	102
M16 x 570 mm	102	102
M16 x 580 mm	102	102
M16 x 590 mm	102	102
M16 x 600 mm	102	102
M16 x 610 mm	102	102
M16 x 620 mm	102	102
M16 x 630 mm	102	102
M16 x 640 mm	102	102
M16 x 650 mm	102	102
M16 x 660 mm	102	102
M16 x 670 mm	102	102
M16 x 680 mm	102	102
M16 x 690 mm	102	102
M16 x 700 mm	102	102
M16 x 710 mm	102	102
M16 x 720 mm	102	102
M16 x 730 mm	102	102
M16 x 740 mm	102	102
M16 x 750 mm	102	102
M16 x 760 mm	102	102
M16 x 770 mm	102	102
M16 x 780 mm	102	102
M16 x 790 mm	102	102
M16 x 800 mm	102	102
M16 x 810 mm	102	102
M16 x 820 mm	102	102
M16 x 830 mm	102	102
M16 x 840 mm	102	102
M16 x 850 mm	102	102
M16 x 860 mm	102	102
M16 x 870 mm	102	102
M16 x 880 mm	102	102
M16 x 890 mm	102	102
M16 x 900 mm	102	102

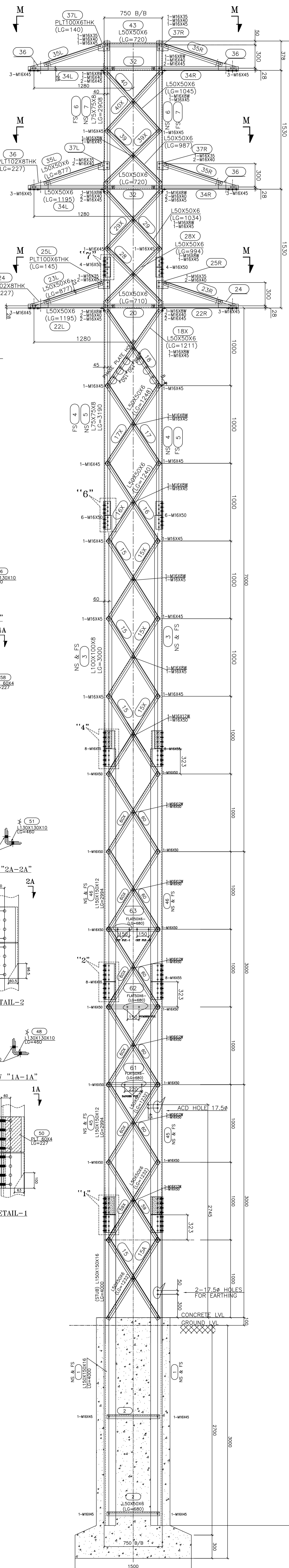
- NOTES:
1. ALL DIMENSIONS ARE IN MM UNLESS OTHERWISE SPECIFIED.
 2. ALL DIMENSIONS TO BE TAKEN FROM FACE UNLESS OTHERWISE SPECIFIED.
 3. ALL DIMENSIONS TO BE TAKEN FROM FACE UNLESS OTHERWISE SPECIFIED.
 4. MIN. EDGE DISTANCE FROM CORNER SHALL BE 25MM FROM CORNER.
 5. ALL UNFINISHED SURFACES ARE TO BE FINISHED WITH 20MM RAIN COAT.
 6. ALL UNFINISHED SURFACES ARE TO BE FINISHED WITH 20MM RAIN COAT.
 7. ALL UNFINISHED SURFACES ARE TO BE FINISHED WITH 20MM RAIN COAT.
 8. ALL UNFINISHED SURFACES ARE TO BE FINISHED WITH 20MM RAIN COAT.
 9. 32MM SPACING SHOULD BE TO BE SPECIFIED WITH EVERY BOLT.



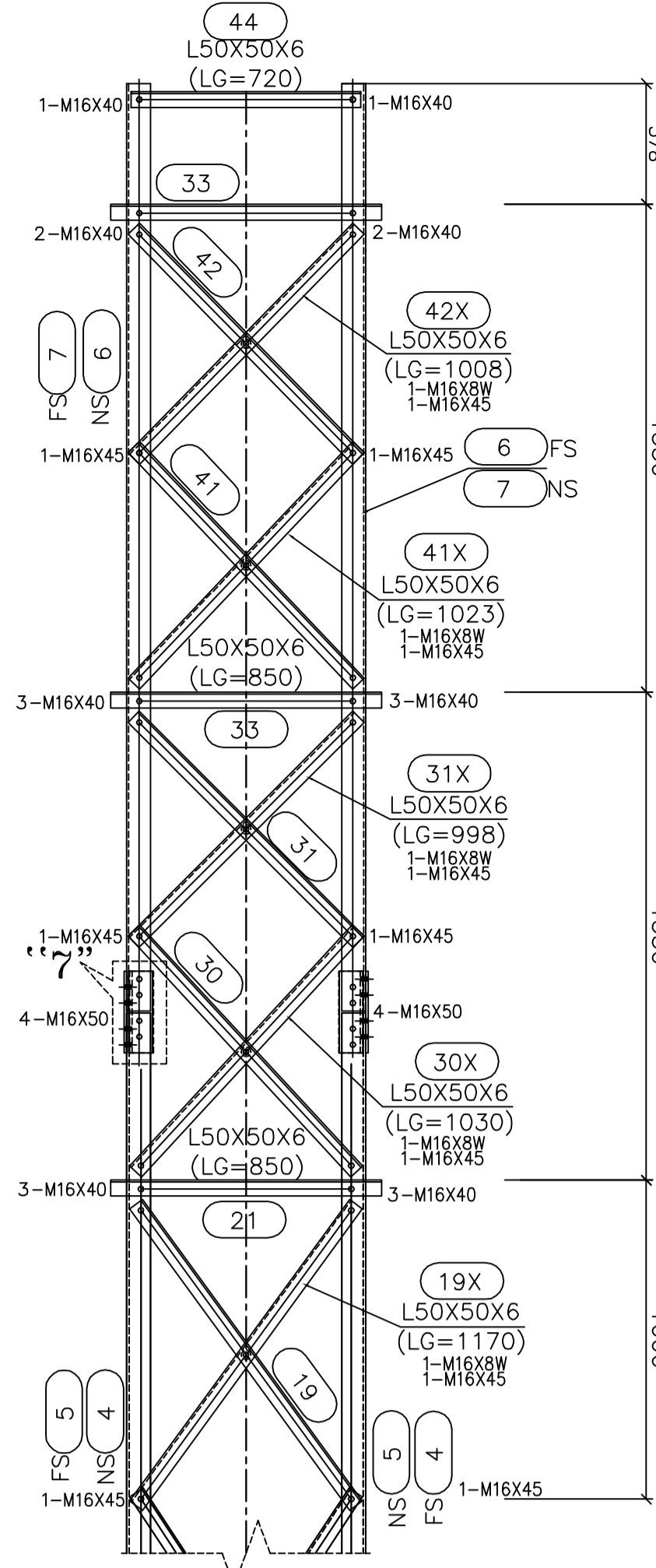
FOUNDATION PLAN



STUB ELEVATION VIEW "F-F"



TRANSVERSE FACE
 M+6 EXTENSION



LONGITUDINAL FACE