

Corrigendum No. – 2

Tender Enquiry No- TPSODL/OT/2020-21/006

Work Description – EGIS System implementation and maintenance at TPSODL

Pre bid queries replies shall be published shortly.

The changes in QR are to be read as per table below: -

	Original Qualification Criteria	Documents Required	Revised Criteria
1	The bidder must have executed at least one project on proposed version of EGIS and its integration with any ERP, CRM SCADA/DMS, SMART Meter and Planning & Analysis tool, in an electric distribution utility anywhere in the world.	<ul style="list-style-type: none"> Successful Completion Certificates for all such projects from the concerned utility If requested by TPSODL, bidder will arrange a visit to one of its client's implementation sites. Lodging boarding will be taken care by TPSODL 	<p>The bidder must have executed at least one project on proposed version of EGIS and its integration with ERP, CRM SCADA/DMS, SMART Meter and Planning & Analysis tool, in an electric distribution utility anywhere in the world.</p> <p>In case of Group companies experience of bidder will be accepted subject to following conditions</p> <p>i. In case of parent company is participating, subsidiary for which credentials are being used should be 51% owned subsidiary of parent company</p> <p>ii. In case subsidiary is participating, parent for which credentials are being used should be 51% owned by parent</p>
2	Bidder must have implemented EGIS and its integration with other enterprise systems in at least two electrical distribution utilities in India.	<ul style="list-style-type: none"> Successful Completion Certificates for all such projects from the concerned utility 	Offered GIS solution from bidder should be operational and integrated with other enterprise system in at least two electrical distribution utilities in India.
3	The bidder shall be private/public Company registered under Company Act 1956.	<ul style="list-style-type: none"> Certificate of Incorporation and Registration 	
4	The Average Annual Turnover of the prospective bidder(s) during FY 17-18, FY 18-19 and FY19-20 should be equal to or more than Rs 100 .00 Crores.	<ul style="list-style-type: none"> Last three years audited balance sheets and Profit and Loss Accounts Statements 	
5	<p>OEM with help of Channel partner can also participate in this tender enquiry with the following conditions: -</p> <p>(a) OEM must have Average Annual Turnover of 100 Cr. during FY17-18, FY18-19 & FY19-20</p> <p>(b) Channel partner must have Average Annual Turnover of at least in the range of 40 Cr to 50 Cr. during FY17-18, FY18-19 & FY19-20 .</p> <p>(c) The channel partner must have executed at least</p>	<ul style="list-style-type: none"> Last three years audited balance sheets and Profit and Loss Accounts Statements 	<p>OEM with help of Channel partner can also participate in this tender enquiry with the following conditions: -</p> <p>(a) OEM must have Average Annual Turnover of 100 Cr. during FY17-18, FY18-19 & FY19-20</p> <p>(b) Channel partner must have Average Annual Turnover of at least in the range of 40 Cr to 50 Cr. during FY17-18, FY18-19 & FY19-20 .</p> <p>(c) The channel partner must have executed at least one project on proposed version of EGIS and its integration with ERP, CRM SCADA/DMS, SMART Meter and Planning & Analysis tool in an electric distribution utility anywhere in the world.</p> <p>Channel partner also must have</p>

	Original Qualification Criteria	Documents Required	Revised Criteria
	<p>one project on proposed version of EGIS and its integration with any ERP, CRM SCADA/DMS, SMART Meter and Planning & Analysis tool in an electric distribution utility anywhere in the world. Channel partner also must have implemented EGIS in at least two electrical distribution utilities in India.</p> <p>(d) Channel partner must be private/public Company registered under Company Act 1956.</p> <p>(e) Channel Partner shall have certified resources on the proposed GIS technology.</p>		<p>implemented EGIS in at least one electrical distribution utilities in India.</p> <p>(d) Channel partner must be private/public Company registered under Company Act 1956.</p> <p>(e) Channel Partner shall have certified resources on the proposed GIS technology.</p>
4	The bidder shall have certified resources on the proposed GIS technology.	<ul style="list-style-type: none"> CVs of the key full-time dedicated resources for the said project. Please note such persons shall be changed only with prior permission of TPSODL by giving one months' notice with equivalent and approved replacement. 	
5	The bidder shall be valid ISO certified and CMMI Level 5 Company.	<ul style="list-style-type: none"> Latest ISO and CMMI Certificates 	Latest ISO and/or CMMI Certificates
6	The bidder shall be an authorized provider of the technology proposed in India.	<ul style="list-style-type: none"> Authorized Technology Provider's certification. 	
7	Valid EPF Registration Certificate. Valid ESI Registration Certificate.	<ul style="list-style-type: none"> Bidder should submit the Document within 20 days from the award of contract 	
8	Valid GST Registration Certificate. Valid PAN No.	<ul style="list-style-type: none"> Certificate of valid GST and valid PAN No 	
9	Bidder/OEM/Channel Partner should not be blacklisted by any Govt. Organization / utility. Bidder must submit undertaking for the same.	<ul style="list-style-type: none"> Self-Undertaking by bidder/OEM. 	
10	Each bidder/OEM shall submit bid by himself only. A bidder in joint venture / consortium shall not be allowed to participate in the Tender.		

Annexure 6-1(Asset numbering for painting)

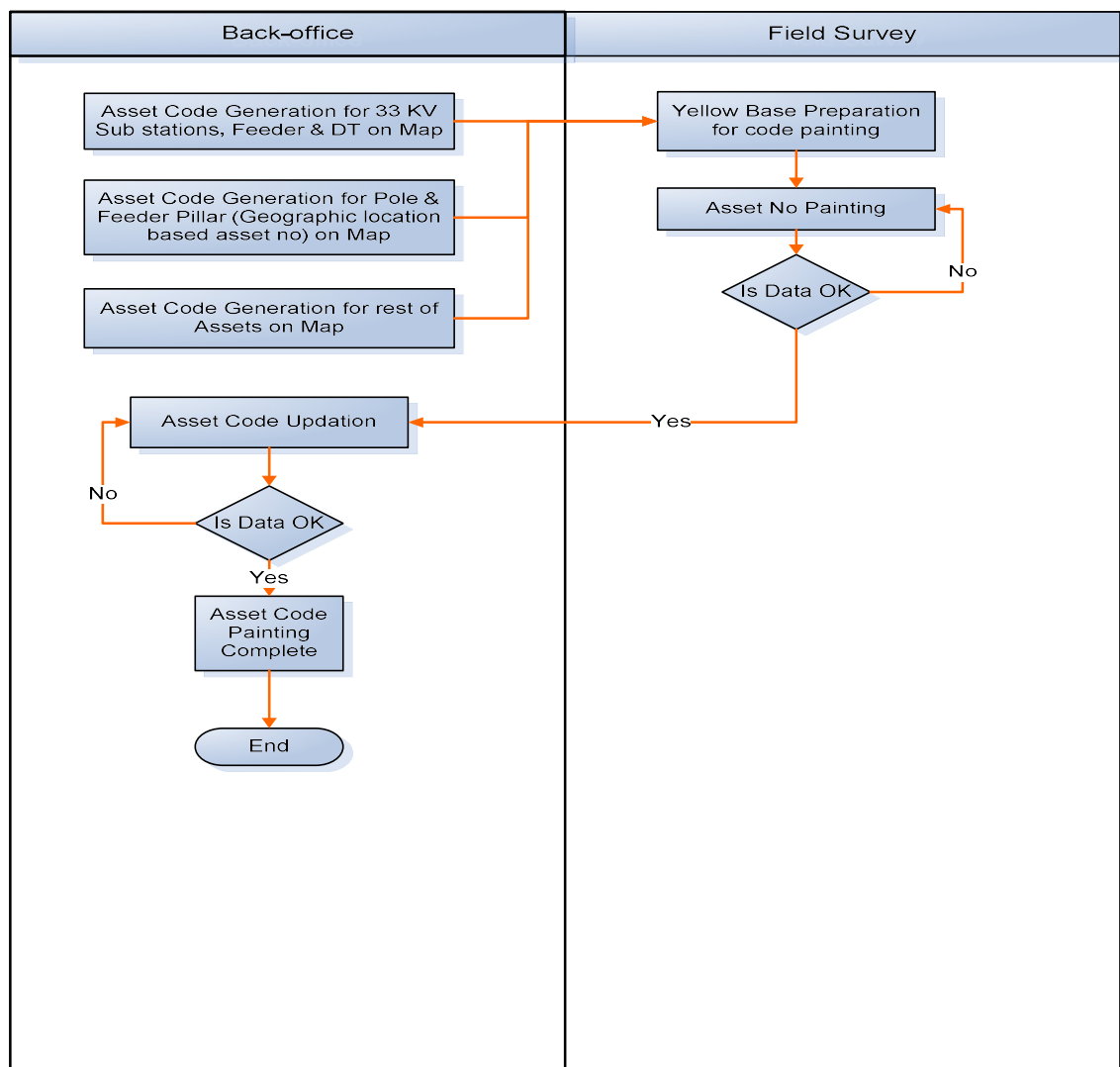
1. Asset Numbering Methodology

For network assets (33 KV to Pole/Feeder pillar) such as pole, feeder pillar, tower, distribution transformer, ACB and Stations unique number will be given.

Those unique number will be maintained in system against the pre-defined assets and the same number will be painted at site on each assets.

Numbering format or logic will be generated for respective assets.

i. Asset Numbering Process



Flow Chat Asset Numbering Process

ii. Asset Numbering Activity Matrix

	Process	Responsibility Desk
1	Initially asset numbering logic will be finalized.	Back office
2	Printout of hard copy maps with all the assets mapped on it will be taken.	Back office
3	Then all the assets will be numbered as per logic on the map.	Back office
4	Visual QC will be done to verify no duplicates number are given and no assets are left out for numbering.	Back office
5	Simultaneously Yellow base of pre-defined area will be painted at site on which numbers will be written.	Field team
6	Then asset numbers will be painted on site above the yellow base in black color.	Field team
7	Random QC will be done to check if the numbers are painted properly and correctly.	Field team
8	If the numbers are painted properly and correctly then the same will be updated in system	Back office
9	If the number are not painted properly and correctly the same will be informed to the Vendor.	Back office
10	Correction and repainting will be done	Field team
11	After rectification the numbers will be updated in system	Back office

iii. Pole/Feeder Pillar/Service Pillar/Meter Box Numbering Methodology

The unique asset numbering of the utility points i.e. Poles, Feeder Pillars, Service Pillars and Meter rooms is vital for consumer and network connectivity reference in field as well as in GIS system also. The numbering of these assets helps in locating all connected objects to these assets, in field.

To track the no. of poles/feeder pillars/ service pillars from where the electricity is distributed to the consumers will be uniquely numbered and same number will be painted on poles. The same will be mapped in GIS to monitor the geographical location of poles and direct the crew members for resolving the service related complaints as well as asset management.

In existing system, pole number is assigned based on current electric connectivity, which is prone to change very often. So each time when network connectivity will change, the pole no of that feeder will change and repainting of pole no is required at field, which is very tedious and expensive task. So to avoid these circumstances each pole will be assigned a unique number based on their geographical location while considering Division, Sub division boundary, Voltage level and main roads.

The methodology for numbering is given below:

Pole numbering Rules

a. Pole numbering and road coding rules

Considering the thickness of the Poles used in TPCODL (formerly CESU), numbers will be written in three lines on pole and it will be divided by two horizontal lines.

First line will provide the information of voltage level as per below-

For LT/FP/SP poles – “LT” will be written

For HT pole / 11 kV – “HT” will be written

For Tower / 33 kV – “EHT” will be written

Second line will provide the information of Division no, Sub division No and Road code as per below-

First two digits – Division No

Third digit – Sub Division No

Annexure 6-2(Asset numbering for painting)

Below mentioned are proposed division & sub division no for pole no assigning.

Circle	Division		Sub Division	Proposed no. for Division and Sub-Division
Name	Name	Number	Number	(First two digit- Division and last digit -Sub Division)
BHUBANESWAR I	BCDD-I,BBSR	I	I	01 1
			II	01 2
			III	01 3
	BCDD-II,BBSR	II	I	02 1
			II	02 2
			III	02 3
	BED, BBSR	III	I	03 1
			II	03 2
	N.E.D, Nimapara	IV	I	04 1
			II	04 2
			III	04 3
BHUBANESWAR II	P.E.D, Puri	V	I	05 1
			II	05 2
			III	05 3
			IV	05 4
	KED, Khurda	VI	I	06 1
			II	06 2
			III	06 3
			IV	06 4
	BED, Balugaon	VII	V	06 5
			I	07 1
	NED, Nayagarh	VIII	II	07 2
			I	08 1
			II	08 2
			III	08 3
			IV	08 4
CUTTACK	CDD-I, Cuttack	IX	I	09 1
			III	09 3
			IV	09 4
			VI	09 6
	CDD No.II, Cuttack	X	I	10 1
			II	10 2
			V	10 3
	CED, Cuttack	XI	I	11 1
			II	11 2
			III	11 3
			IV	11 4
	AED, Athagarh	XII	I	12 1
			II	12 2

	S.E.D, Salipur	XIII	I	13 1
			II	13 2
			III	13 3
PARADEEP	KED No.I, Kendrapara	XIV	I	14 1
			II	14 2
			III	14 3
			IV	14 4
	KED No.II, Marshaghai	XV	I	15 1
			II	15 2
	PED, Paradeep	XVI	I	16 1
			II	16 2
			III	16 3
	JED, Jagatsinghpur	XVII	I	17 1
			II	17 2
			III	17 3
DHENKANAL	DED, Dhenkanal	XVIII	I	18 1
			II	18 2
			III	18 3
			IV	18 4
	A.E.D, Angul	XIX	I	19 1
			II	19 2
			III	19 3
	T.E.D, Chainpal	XX	I	20 1
			II	20 2
			III	20 3
			IV	20 4

After division and Sub Division number there will be Hyphen “ – ” (this will work as a separator between division sub-division number and road code) and after that one/two or three digit will be the **Road Code**.

While painting and entering in system there will be no space between Division no & Sub division no.

Roads will be coded on the basis of road width 15 ft. or above and any prominent/known road. Road width with 15ft. and above or any prominent road will come under major Road and the road with width less than 15ft. will come under Minor Road. e.g., on each pole in second line, it shall be numbered as

LT011-1.... LT011-2.....LT011-100 onwards.

Third Line will provide the information of pole no.

Wherever LT Poles/FP /SP and HVDS/HT Poles are going parallel then road code for LT Poles/FP /SP and HVDS/HT Poles remain same but numbering is done separately.

b. Numbering New Poles

Poles of the all coded road will be numbered from 1 onwards in last line e.g.

For LT Pole /FP/SP will be numbered as (mentioned in bold)

LT 011-1	,	LT 011-1	,	LT 011-1	onwards
1		2		3	

Similarly, For HVDS/HT Pole

HT 011-1	,	HT 011-1	,	HT 011-1	onwards
1		2		3	

Similarly, For Towers

EHT 011-1	,	EHT 011-1	,	EHT 011-1	onwards
1		2		3	

c. Coding for T-offs

Case 1: Any T-off from any pole is depicted as **" / "**. In electrical distribution network, T-off is a point from where another branch is taken to cater different areas. e.g.

For LT Pole/FP/SP, 1st pole onwards from T-off shall be numbered as (mentioned in bold)

LT 011-1	,	LT 011-1	,	LT 011-1	onwards
1/1		1/2		1/3	

Similarly, For HVDS/HT Pole

HT 011-1	,	HT 011-1	,	HT 011-1	onwards
<u>1/1</u>		<u>1/2</u>		<u>1/3</u>	

Similarly, For Towers

EHT 011-1	,	EHT 011-1	,	EHT 011-1	onwards
<u>1/1</u>		<u>1/2</u>		<u>1/3</u>	

Case 2: In case two T-off from one pole are there then two different T-off will be numbered separately. e.g.

For LT Pole/FP/SP, 1st pole onwards from **1st T-off** shall be numbered as (mentioned in bold)

LT 011-1	,	LT 011-1	,	LT 011-1	onwards
<u>1/1/1</u>		<u>1/1/2</u>		<u>1/1/3</u>	

Similarly, For HVDS/HT Pole

HT 011-1	,	HT 011-1	,	HT 011-1	onwards
<u>1/1/1</u>		<u>1/1/2</u>		<u>1/1/3</u>	

Similarly, For Towers

EHT 011-1	,	EHT 011-1	,	EHT 011-1	onwards
<u>1/1/1</u>		<u>1/1/2</u>		<u>1/1/3</u>	

1st Pole onwards from **2nd T-off** shall be numbered as (mentioned in bold)

LT 011-1	,	LT 011-1	,	LT 011-1	onwards
<u>1/2/1</u>		<u>1/2/2</u>		<u>1/2/3</u>	

Similarly, For HVDS/HT Pole

HT 011-1 ,	HT 011-1 ,	HT 011-1	onwards
<u>1/2/1</u>	<u>1/2/2</u>	<u>1/2/3</u>	

Similarly, For Towers

EHT 011-1 ,	EHT 011-1 ,	EHT 011-1	onwards
<u>1/2/1</u>	<u>1/2/2</u>	<u>1/2/3</u>	

d. Numbering New poles between existing Poles

In case of installation of new pole(s) between 2 existing poles then new pole shall be suffixed with Alphabet starting with “A” onwards. e.g.

For LT Pole/FP/SP, new pole is installed between pole no. 1 & 2 then new pole is numbered as (mentioned in bold)

LT 011-1 ,	LT 011-1 ,	LT 011-1	onwards
<u>1/1</u>	<u>1/1A</u>	<u>1/ 2</u>	

Similarly, For HVDS/HT Pole

HT 011-1 ,	HT 011-1 ,	HT 011-1	onwards
<u>1/1</u>	<u>1/1A</u>	<u>1/ 2</u>	

e. Numbering extension of poles for feeding new areas

In case of extension of poles for feeding new areas, continuous numbering can be given if possible, and in case it is not possible then same is suffixed with A, B, C as per Rule no 4 or till new road code is generated as per Rule no 1.

E.g. for LT Pole/FP/SP, continuous numbering shall be (mentioned in bold)

LT 011-1 ,	LT 011-1 ,	LT 011-1 ,	LT 011-1 ,	LT 011-1
1/1	1/2	1/ 3	1/ 4	1/ 5

Similarly, For HVDS/HT Pole

HT 011-1 ,	HT 011-1 ,	HT 011-1 ,	HT 011-1 ,	HT 011-1
1/1	1/2	1/ 3	1/ 4	1/ 5

OR new road code is generated (mentioned in bold)

LT 011- 2 ,	LT 011- 2 ,	LT 011- 2 ,	LT 011- 2 ,	LT 011- 2
1/1	1/2	1/ 3	1/ 4	1/ 5

Similarly, For HVDS/HT Pole

HT 011- 2 ,	HT 011- 2 ,	HT 011- 2 ,	HT 011- 2 ,	HT 011- 2
1/1	1/2	1/ 3	1/ 4	1/ 5

f. Pole Painting Specifications

- Painting shall be carried out at 5.5 ft height of poles from ground level and maintain consistency for all poles.
- Pole numbers are written in two lines in terms of numerator and denominator on PCC poles or where pole width is sufficient, while on rail pole no shall be painted in three line.
- Paint the number with Yellow background with black color number.
- Number painted on poles should not be tilted, distorted and spread over etc.
- Number should be easily readable from minimum 20 ft. distance.
- Base Box shall be straight and Number shall be written with stencils with dimensions as mentioned below:

LT
011-1
1

HT
011-1
2

EHT
011-1
3

Pole Numbering Proposal

LT011-1/1
HT011-1/2
EHT011-1/3

Pole no updation
in system

Voltage Level
DivisionSub division-Road Code
Pole No

011 (Frist Two digit of Division no & last is
subdivision no)

iv. Sub Station Numbering Methodology

For 33 kV & 11 kV Station

Painting on the main gate/Wall/Pole/Fencing for Plinth Mounted and Pole Mounted Stations

- Name of the substation
- Capacity of DTs or PTs
- DT1 & DT2 or PT1 & PT2

Pole Mounted DTC Painting Pattern

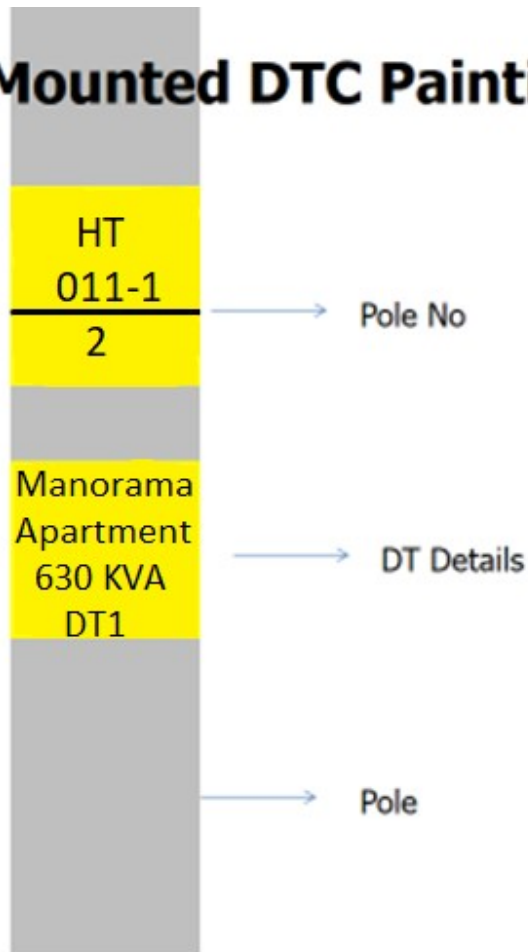


Figure DTC painting pattern - for Pole Mounted

Plinth Mounted DTC Painting Pattern



Figure DTC Painting Pattern

33/11KV Station Painting Pattern

Board Colony 10MVA PTR1

Figure 1 33/11KV Station Painting Pattern

Painting on equipment (Transformer and Breaker)

- Manufacturer Serial No
- Manufacturer Name
- Capacity

Transformer Painting Pattern

A yellow rectangular label with black text, centered on a light gray background. The text reads "SR45789 L&T 630KVA".

SR45789 L&T 630KVA

Figure Transformer painting pattern

Circuit Breaker Painting Pattern

A yellow rectangular label with black text, centered on a light gray background. The text reads "SR9832 ABB 400KVA".

SR9832 ABB 400KVA

Figure Breaker Painting Pattern

As per requirement all the Transformer and Breaker has to be painted. But at present condition all the equipment at site are live and charged and for painting Transformer and Breaker we have to take proper shut down. Taking shutdown every time will be practically not possible and carrying out the painting without taking proper shutdown will be a serious safety concern.

So presently for the live transformer and breaker asset number will be updated in the system and for proper asset management the same number will be synced with SAP.

This numbering logic and painting will be properly applicable for the new equipment. All the new transformer and breaker before realizing from the store has to be painted in the above mentioned manner and the same number will be updated in the GIS system.

v. Asset Numbering Checks and validation

The primary objectives of involving Checks and Validations for Asset numbering are to ensure that all predefined assets for numbering are numbered properly with proper logic so that it meets most of the project specifications and acceptance criteria envisaged for the project. It provides the project team with a standard set of criteria to follow during the pilot and full-scale project, and ensures a minimum amount of data rework is necessary as the project evolves.

At each specific stage Checks are required, starting from number allocation to the assets till punching of attributes in system.

There are chances of mistakes during the activity. Therefore checks will be performed on the following:

- No duplicate number for any specific individual assets.
- Proper logic to be followed while assigning the numbering of assets.
- While painting the asset numbers at site proper color coding will be followed.
- While painting the asset numbers at site proper font and size will be followed.
- During entering the data in system precautions will be taken.
- System generated checks will be there to find out the duplicate numbers if any.

Annexure 6-1 Committed network Quantity for field Survey

Committed network Quantity for field Survey

Entire network connectivity from 33/11 kV Substation to Consumer meter is to be surveyed and mapped by the vendor as per agreed data model. Below is the list of major assets which will help vendor to calculate survey and mapping efforts for network under pilot area

Sr.No	Major Assets	Committed Quantity	Proposed unit rate by vendor
1	Consumer Meter	125000	
2	LT Ckt length(kms)	500	
3	Distribution Transformers	850	
4	11 kV Ckt length(kms)	250	
5	33kV Ckt length(kms)	40	
6	33/11 kV Substations	9	
7	Asset quantity for painting	16000	

TPSODL replies to pre bid queries

No.	Query Related to	Description as per Bid Document	Remarks - Query / Clarification 1	Remarks - Query / Clarification 2	Response from TPSODL
1	Annexure 1 Schedule for Items (Price Bid Performa)	Additional Query	Customer has asked for Price Breakup to be offered for bundled software price, please share price schedule or proforma for submission.		Vendor to give breakup in his own format
2	Annexure 11 Warranty-Post implementation Support Compliance	Annexure 11- Warranty/Post implementation Support Compliance Point 2: Solution Warranty - Warranty/Post implementation support of complete solution for one year after going live is within the scope of the project. Paid support is proposed for five years after successful completion of warranty period. After going live, onsite support shall be for min 3 nos. of resources in 1st year and min. 2 no. resource after that. This includes product/patches/upgrade support and application/tool/integration support and development for new requirement as well time to time.	For the warranty and solution support period of 3 years after Go-Live, TPSODL has asked for dedicated man- power that will be maintaining the system including any minor developments, upgrades etc. As the volume of work for these resources are not certain and will be governed by many factors in control of TPSODL but not in control of bidder or proposed solution, we request that the payment shall not be linked to SLA		No change Required
3	Annexure 11 Warranty-Post implementation Support Compliance	Annex 11 Warranty/Post implementation Support Compliance point#1 and #2	We understand that 1 year AMC/warranty on GIS solution shall be offered by the bidder with implementation scope, After that 3 years(mandate) and 2 years (optional) AMC cost need be quoted as part of the scope. For GIS product, ATS/Warranty needs to be offered for 5 years after supply of the product. Please confirm on our understanding.		One year AMC/warranty on GIS solution shall be offered by the bidder after successful Go-Live , After that 3 years(mandate) and 2 years (optional) AMC cost need be quoted as part of the scope. For GIS product, 1 year inbuilt warranty shall come with the product. Warranty ATS/Warranty needs to be offered for 5 years after completion of one year warranty.
4	Annexure 11 Warranty-Post implementation Support Compliance	Annexure 11- Warranty/Post implementation Support Compliance Point 2: Solution Warranty - Warranty/Post Implementation support of complete solution for one year after going live is within the scope of the project. Paid support is proposed for five years after successful completion of warranty period. After going live, onsite support shall be for min 3 nos. of resources in 1st year and min. 2 no. resource after that. This includes product/patches/upgrade support and application/tool/integration support and development for new requirement as well time to time.	For the warranty and solution support period of 3 years after Go-Live, TPSODL has asked for dedicated man- power that will be maintaining the system including any minor developments, upgrades etc. As the volume of work for these resources are not certain and will be governed by many factors in control of TPSODL but not in control of bidder or proposed solution, we request that the payment shall not be linked to SLA.		No change Required
5	Annexure 11 Warranty-Post implementation Support Compliance	The GIS database shall have deployment readiness on standard OEM supported RDBMS (Oracle, SQL Server etc.) - Bidder has to ensure the support of proposed RDBMS from its respective OEM.	RDBMS support contract would include support hours OEM based on the contract type? Kindly explain who will purchase the DB licenses and support contract and who will provide the installation, configuration and BAU Support.		DB License , support, installation, configuration and BAU support has to be provided by the bidder.
6	Annexure 11 Warranty-Post implementation Support Compliance	User Management	Is this in scope of installation & configuration, warranty and 5 yrs. paid Support?		Initial user creation , authroization,configuration for data layers will be in scope of bidder. During support period user management and permission to data layers will be managed by TPSODL. In case of issue, support need to be provided by bidder.
7	Annexure 11 Warranty-Post implementation Support Compliance	User Management: Authentication and Authorization	Is this in scope of installation & configuration, warranty and 5 yrs. paid Support?		Initial user creation , authroization,configuration for data layers will be in scope of bidder. During support period user management and permission to data layers will be managed by TPSODL. In case of issue, support need to be provided by bidder.
8	Annexure 11 Warranty-Post implementation Support Compliance	SECURITY	Is this in scope of installation & configuration, warranty and 5 yrs. paid Support?		Initial user creation , authroization,configuration for data layers will be in scope of bidder. During support period user management and permission to data layers will be managed by TPSODL. In case of issue, support need to be provided by bidder.
9	Annexure 11 Warranty-Post implementation Support Compliance	SYSTEM MAINTAINANCE	Is this in scope of warranty and 5 yrs. paid Support includes server, DB, OS, Middleware, Backup & storage support?		For , section 14.1 and 14.2 :Initial user creation , authroization,configuration for data layers will be in scope of bidder. During support period user management and permission to data layers will be managed by TPSODL. In case of issue, support need to be provided by bidder. For section 14.3,14.4,14.5, 14.6 to be managed by vendor during implementation as well as during support period.

No.	Query Related to	Description as per Bid Document	Remarks - Query / Clarification 1	Remarks - Query / Clarification 2	Response from TPSODL
10	Annexure 12 Time Schedule, Payment Terms	Annexure 12- Point 6 & 7 - Integrations with future systems - ADMS, network planning and FFA	Has TPSODL already selected the respective system for ADMS, network planning and FFA? If not, we request to remove the integration from the current scope as the integration services efforts is largely dependent on the target system and use case scenarios and it is extremely difficult to estimate the efforts required for such future integrations		Integration will be based as per standard industry practises ,vendor to estimate cost based on its experience
11	Annexure 12 Time Schedule, Payment Terms	Annexure-12 Payment Terms	We request TPSODL to amend the current payment term to improve cashflow of the project. Please refer Attachment-B		No Change
12	Annexure 12 Time Schedule, Payment Terms	Annex 12 :Point #5, Point #6, Point #7	MBC, ERP, Energy Audit, CRM, FFA, Network planning and ADMS are the only system to be integrated with GIS. Please confirm .		Yes
13	Annexure 12 Time Schedule, Payment Terms	Generic	Please specify the product level ATS and procurement payment milestone as it is not included in Annexure-12.		No separate milestone for product delivery. We expect Production license to be made available along with milestone no. 8(User Acceptance Testing (UAT) or System Acceptance) Testing of Annexure-12 ,Time Schedule, Payment Terms and Penalty Clause'
14	Annexure 12 Time Schedule, Payment Terms	Annexure 12- Point 6 & 7 - Integrations with future systems - ADMS, network planning and FFA	Has TPSODL already selected the respective system for ADMS, network planning and FFA? If not, we request to remove the integration from the current scope as the integration services efforts is largely dependent on the target system and use case scenarios and it is extremely difficult to estimate the efforts required for such future integrations		Integration will be based as per standard industry practises ,vendor to estimate cost based on its experience
15	Annexure 2 Technical Specification Compliance	Annexure-2 Technical Specifications Compliance	Compliance format	We suggest that the structure of the technical compliance matrix be slightly altered to adequately reflect the confirmation of availability of the out of the box features of the required product that is the essence of this NIT. •The "Bidders Compliance" column be suitably labelled to highlight confirmation of the availability of the said functionality as an out of the box feature in the current version of the software •A column included to mention the name and the version of the product that delivers the stated functionality as an out of the box feature •The "Remarks" column be suitably labelled to capture the product details indicating compliance with the required out of the box feature that are freely available on the public web	OK. It is requested to all vendors to categorize functionality as OOB or need to be customized. Please mention this wrt to proposed product , solution and associated version only.
16	Annexure 2 Technical Specification Compliance	Annexure 2: Technical specifications Section 1.03	The solution shall provide an integration toolkit and have standard, published API sets to allow the integration with ERP for Asset Replication and work management business workflow integration.	The technical and solution architecture for the integration solutions would be developed based on system study of the existing ERP system. Please confirm.	Yes, however system that is being suggested by vendor shall either have readymade applications to integrate with other enterprise system or have proven case study of integration of the proposed system with other enterprise system. Purpose is to have well tested and deployed integration interface with minimum efforts on customization
17	Annexure 2 Technical Specification Compliance	Annexure 2: Technical specifications Section 1.13	The GIS product shall have an industry standard Data Model and shall be CIM compliant. Standard adaptors to export the data in CIM model should be available off the shelf. GIS product should be an enterprise version without open source inheritance.	Do you have any preference regarding implementation of data model ?	CIM data model with focus on utility data model is our preference and satisfying other compliance conditions.
18	Annexure 2 Technical Specification Compliance	Annexure 2: Technical specifications Section 1.13	The GIS product shall have an industry standard Data Model and shall be CIM compliant. Standard adaptors to export the data in CIM model should be available off the shelf. GIS product should be an enterprise version without open source inheritance.	For CIM compliance, details w.r.t existing data and format possessed by TPSODL are to be known.	There is no existing data. Standard CIM compliance is required.
19	Annexure 2 Technical Specification Compliance	Annexure 2: Technical specifications compliance	A facility for configurable workflow for supporting business processes and workflows. The workflow also should get integrate with other systems.	The existing business process workflow would be identified during the system study phase, based on which the suitable technical solution would be proposed.	Yes, however system that is being suggested by vendor shall either have readymade applications to integrate with other enterprise system or have proven case study of integration of the proposed system with other enterprise system. Purpose is to have well tested and deployed integration interface with minimum efforts on customization

No.	Query Related to	Description as per Bid Document	Remarks - Query / Clarification 1	Remarks - Query / Clarification 2	Response from TPSODL
20	Annexure 2 Technical Specification Compliance	Annexure 2: Technical specifications compliance	The system must have ready capability for SOA based integration, and the bidder shall be responsible to do The system must have ready capability for SOA based integration, and the bidder shall be responsible to do necessary adaptations (GIS side) for development of interface for but not limited to - 1. Energy Auditing 2. Technical Feasibility for New Connection 3. CAPEX management 4. Asset Lifecycle Management	Can we anticipate any other systems to be integrated with the proposed GIS solution, other than those mentioned in the tender document?	Please refer item no. 5,6 and 7 of Annexure 12 - Time Schedule, Payment Terms and Penalty Clause to know list of integrations.
21	Annexure 2 Technical Specification Compliance	Annex 2 : Technical Specifications Compliance Point#10 :Technology Platforms	We understand that supported browser for web client shall be MS Edge and Chrome only. Internet Explorer, Firefox etc. is out of scope .Please confirm		MS Edge ,Chrome and compatibility with mobile browser is required
22	Annexure 2 Technical Specification Compliance	Data Model - The proposed solution shall have a proven Utility specific electric distribution data model with a flexible circuit model. The data model shall include the following: The proposed Utility data model and application shall be matured industry standard product supported by OEM with existence for more than 3 years and have been implemented by at least 3 electric distribution utilities. OEM shall share a self-certification along with the list of reference customers meeting the said criteria.	We understand that bidder to quote for productize version of Utility data model directly from GIS OEM as plug and play COTS. Please confirm the role of GIS system integrator in configuring the same data model as per TPSODL requirement.		It is responsibility of vendor to implement complete solution including customization as may be required by implementation agency as per requirement of TPSODL.
23	Annexure 3 System Requirement Compliance	Desktop Application Requirements – Point 12 Sharing the map-link for asset and Customer identification	We request TPSODL to elaborate this requirement. What is the use of this map-link?		A map link is generated from GIS system which is shared with users to pinpoint particular location on backdrop of map. E.g. Google map link generated from GIS system can be sent to field person enabling him to navigate to pinpoint location
24	Annexure 3 System Requirement Compliance	Desktop Application Requirements – Point 14: Analysis of Commercial Complaints - Help in Root Cause Analysis of commercial complaints in few scenarios	We request TPSODL to provide the details of the root cause analysis that shall be performed.		Spatial and data analysis in the backend based to address specific business problems. E.g. Highlight and report 'Bill Not received cases' , 'Plan CRC locations based on Consumer Density'. These are sample ideas, however exact requirement will be collected during System Requirement Study
25	Annexure 3 System Requirement Compliance	Annexure 3: Desktop, Web, Mobile Application requirements	Desktop, Web, Mobile Application requirements Page no : 37 to 43	Do you expect any other additional requirements for Desktop, Web and Mobile applications, which are not stated in the tender document?	No. However vendor can give suggestions for overall success of the system
26	Annexure 3 System Requirement Compliance	Annexure 3: Desktop, Web, Mobile Application requirements	Desktop, Web, Mobile Application requirements Page no : 37 to 43	Are these applications intended for the external users as well?	External users will use Web and/or mobile applications.
27	Annexure 3 System Requirement Compliance	Annex 3 Web Application requirements	We understand that only Web based spatial viewing is part of scope, not Web based GIS spatial data editing. Please confirm.		Web and mobile system should have facility of 'Redlining' using which users can easily draw schematic and capture changes in the system which will be automatically sent to desktop user to update in main database. However, If facility to update attribute of object is given through web based system then it will be helpful
28	Annexure 3 System Requirement Compliance	Asset Movement Tool	We understand that this functionality talks about the integration of GIS desktop application with Inventory register (Asset Management). Please confirm our understanding.		For complete asset life cycle management starting from planning, BOQ , creation , movement and till retirement of asset has to be handled by integrated workflow between GIS and ERP
29	Annexure 3 System Requirement Compliance	Annexure-3 General System Requirements Within first two months of Project Kick Off, Implementation agency shall finalize detailed BoQ, Data Centre architecture, specifications and deployment plan of production environment Hardware and related components.	We understand that the bidder is required to propose the hardware sizing for the production & development environment. We understand that the procurement and deployment of Hardware Infrastructure is in customer scope		"1. Please refer point no. 2 in Annexure-3 for detail. Vendor has to provide Development and testing environment which includes hardware. These servers should have minimum 5 years of warranty and would be placed in TPSODL Data Centre at Berhampur. Quote for the same need to be mentioned in Annexure-12, 'Time Schedule, Payment Terms and Penalty Clause' under point 'Readiness of GIS development environment at utilities premise. 2. Production Hardware with required OS, antivirus, firewall etc. will be provided by TPSODL. 3. GIS Software along with required database licenses needs to be provided by the bidder. Any other proprietary software, hardware or licenses has to be provided by the bidder only"

No.	Query Related to	Description as per Bid Document	Remarks - Query / Clarification 1	Remarks - Query / Clarification 2	Response from TPSODL
30	Annexure 3 System Requirement Compliance	Desktop Application Requirements – Point 12 on page 39: Sharing the map-link for asset and Customer identification	Request you to elaborate this requirement. What is the use of this map-link		A map link is generated from GIS system which is shared with users to pinpoint particular location on backdrop of map. E.g. Google map link generated from GIS system can be sent to field person enabling him to navigate to pinpoint location
31	Annexure 3 System Requirement Compliance	Desktop Application Requirements – Point 14 on page 39: Analysis of Commercial Complaints - Help in Root Cause Analysis of commercial complaints in few scenarios	Request to provide the details of the root cause analysis that shall be performed.		Spatial and data analysis in the backend based to address specific business problems. E.g. Highlight and report 'Bill Not received cases', 'Plan CRC locations based on Consumer Density'. These are sample ideas, however exact requirement will be collected during System Requirement Study
32	Annexure 3 System Requirement Compliance	Mobile Application Requirements: Shall be compatible with all mobile sizes and shall work in online and offline mode	Can the bidder propose a one-page responsive web application meeting the Mobile Application Requirements that can be utilized on the mobile browser without any need of installation on the device? Pl. confirm.		The purpose of mobility application is not limited to online use because for this utility there will be many nos. of areas where network connectivity will be a challenge
33	Annexure 4 Integrated Business Process Requirement	Energy Audit - GIS shall sync incremental Consumer details after any in DT-Consumer hierarchy.	As per our understanding that ERP is the consumer master(referring point#6 and # 9 under annex 4) and GIS is slave, then as given in point#10 why GIS will pass the incremental consumer to ERP. Please elaborate.		GIS will pass those details of consumers which are created in GIS e.g. 'Building ID of Consumer meter', 'Distribution Transformer Meter no.' to which Consumer meter is connected in GIS
34	Annexure 4 Integrated Business Process Requirement	Annexure 4- Integrated Business Processes: Single Sign-On	Is there any existing Single Sign-On system existing at TPSODL that needs to be integrated with proposed solution?		To be integrated with either Active Directory or SAP Single SignOn is available at TPSODL
35	Annexure 6 Field Survey Compliance	Asset Painting Specifications:	Please let us know plate specification like Hand Painting/ plate/ Sticker/ Height/ Width/ Breath of the painting. If plate is being considered, then what will be the material?		Number will be Hand painted. Dimesions are 8 x 20 cm for Rail Pole and 12 x 20 cm for other assets. Assets to be covered for painting are Pole, Transformer, CB ,LTP , 33/11 Substations . Reference Document which is being used for painting assets in TPCODL is provided. On similar line, with necessary changes, a new asset painting document will be created for TPSODL in consultation with the selected vendor.
36	Annexure 6 Field Survey Compliance	Consumer Indexing	Photograph of consumer or meter is required or not? Please confirm.		Photograph is required as a proof of visit where meter number should be clearly visible in photo. Along with photo other attributes of meters like current reading etc. are required to be captured during survey. Photograph is not required to be maintained in Core GIS database.
37	Annexure 6 Field Survey Compliance	Consumer Indexing	Whether TPSODL will provide the consumer list with location data?		Consumer list with address will be provided. Geographic location in terms of Lat/Long are not available and need to be captured during field survey
38	Annexure 6 Field Survey Compliance	GIS Survey	For the base map, does the bidder is required to procure and supply the satellite imagery, preparation of land use – land base map (primary field survey) Or does this data will be shared by TPSODL. Pl confirm.		For the pilot area, TPSODL has initiated procurement of Satellite image. However, delay is expected due to government approvals. If TPSODL is not able to arrange Satellite image then vendor has to find alternate source to create base map. Vendor can provide quote for arranging satellite image. While placing the PO , TPSODL will communicate whether vendor is required to buy satellite image or TPSODL will provide it.
39	Annexure 6 Field Survey Compliance	1.1 Broad Scope of Work	Item 5: Data survey, name plate writing and painting, capture and update of Pilot Area for testing of deployed functionalities. The same shall be treated as the base for system acceptance and sign-off. Refer 'Annexure-6: Field Survey Compliance'	Field data survey activities would be conducted by partnering with third party survey vendors as identified by TPSODL or the bidding consortium. Please confirm.	Survey vendor will not be arranged by TPSODL, it has to be arranged by bidder.
40	Annexure 6 Field Survey Compliance	Annexure-6, Guidelines for Survey and Asset Painting, Point No.1: For Field Survey, Vendor is required to provide surveyed, digitized and QC data to TPSODL.	1)Please Clarify the Survey will be done by GPS device or Mobile Device? 2) For data collection, will Client will provide the Mobile Application?		Vendor can use any proven method to achieve accuracy of +/- 1m. Survey methodology need to be approved by TPSODL. Mobile application will not be provided by TPSODL
41	Annexure 6 Field Survey Compliance	Annexure-6, Pilot Area Details, Consumers: 1,30,000 (+/-10%) Nos.	We request you to allow us to do the Consumer survey Feeder/DTR wise. Kindly share your views.		It seems OK , however vendor need to finalize the approach to meet timeline
42	Annexure 6 Field Survey Compliance	Annexure-6, Guidelines for Survey and Asset Painting, Point No.11:Name plate writing and painting based on sequence generated using GIS system.	Kindly share the format and specification for writing and painting of assets.		Number will be Hand painted. Dimesions are 8 x 20 cm for Rail Pole and 12 x 20 cm for other assets. Assets to be covered for painting are Pole, Transformer, CB ,LTP , 33/11 Substations . Reference Document which is being used for painting assets in TPCODL is provided. On similar line, with necessary changes, a new asset painting document will be created for TPSODL in consultation with the selected vendor

No.	Query Related to	Description as per Bid Document	Remarks - Query / Clarification 1	Remarks - Query / Clarification 2	Response from TPSODL
43	Annexure 6 Field Survey Compliance	Pilot Area Details:	Do we have to develop any base map on the pilot town, if yes who will provide the satellite imagery for development of base map.		Digitization , survey , importing base map in EGIS software and demonstrating application on base map is part of this RFP. For the pilot area, TPSODL has initiated procurement of Satellite image. However, delay is expected due to government approvals. If TPSODL is not able to arrange Satellite image then vendor has to find alternate source to create base map. Vendor can provide quote for arranging satellite image. While placing the PO , TPSODL will communicate whether vendor is required to buy satellite image or TPSODL will provide it.
44	Annexure 6 Field Survey Compliance	Total no of 11kv feeders	Please provide a tentative quantity in line km for Survey & mapping of 11kv feeders , we also request to segregate the exiting line item in the price bid and include separate line item in the price bid with minimum quantity in cqt km to provide an estimates required.		Please refer new annexure , Annexure 6-1 Committed Network Quantity for field survey. Vendor to provide unit rate also
45	Annexure 6 Field Survey Compliance	Total no of 33kv feeders	Please provide a tentative quantity in line km for Survey & mapping of 33kv feeders , we also request to segregate the exiting line item in the price bid and include separate line item in the price bid with minimum quantity in cqt km to provide an estimates .		Please refer new annexure , Annexure 6-1 Committed Network Quantity for field survey. Vendor to provide unit rate also
46	Annexure 6 Field Survey Compliance	Consumer	Please provide information on type of consumer (how much percentage is the HT consumer).		Most of the consumers are domestic . Segregation of consumer can be given to selected party.
47	Annexure 6 Field Survey Compliance	Asset Sequence generation and painting	Please provide a tentative quantity of network asset feeders , we also request to include separate line item in the price bid with minimum quantity in cqt km to provide an estimates.		Please refer new annexure , Annexure 6-1 Committed Network Quantity for field survey
48	Annexure 6 Field Survey Compliance	All spatial features captured shall be within +/-1 m accuracy. TATA POWER shall decide the procedures to check the positional accuracy of the spatial features in delivered data through its sources and wherever part or whole of the data is not found meeting the said criteria shall be rejected and the successful bidder will need to redo the same with no extra time	As per the specification it is required to do DGPS Survey to achieve +/- 1 m accuracy.		Vendor can use any proven method to achieve accuracy of +/- 1m. Survey methodology need to be approved by TPSODL
49	Annexure 6 Field Survey Compliance	Field Survey - Network assets - Underground survey	Is there any scope of Underground Survey, If yes do we have to use GPR.		Most of the electrical network is overhead . Use of GPR is not expected . For any underground electrical network , location and attribute data reference for the purpose of UG mapping will be provided by TPSODL
50	Annexure 6 Field Survey Compliance	Field Survey - Network assets - Underground survey	Please provide the quantity details for underground survey, if any.		Most of the electrical network is overhead . Use of GPR is not expected . For any underground electrical network , location and attribute data reference for the purpose of UG mapping will be provided by TPSODL
51	Annexure 6 Field Survey Compliance	Final Data delivery	Please provide the final data delivery format for use in EGIS.		Implementing agency has to implement the project on turnkey basis . Defining approach and methodology for implementation , field survey , QC etc.. has to be done by implementation agency as per industry best practice .
52	Annexure 6 Field Survey Compliance	Consumer Indexing	Photograph of consumer or meter is required or not? Please confirm.		Photograph is required as a proof of visit where meter number should be clearly visible in photo. Along with photo other attributes of meters like current reading etc. are required to be captured during survey. Photograph is not required to be maintained in Core GIS database.
53	Annexure 6 Field Survey Compliance	Consumer Indexing	Whether TPSODL will provide the consumer list with location data?		Consumer list with address will be provided. Geographic location in terms of Lat/Long are not available and need to be captured during field survey
54	Annexure 6 Field Survey Compliance	Point no 3 ; Data survey, digitization, QC for pilot area (As per Annexure-6); Pilot Area Details:	Pls confirm, if bidder need to quote for Data survey, name plate writing and painting, capture and update for PILOT area only ? Do the bidder need not quote for rest of the circles of TPSODL? Pls confirm.		For this RFP ,Scope of survey and mapping is limited to 'Berhampur' town . Subsequently based on learning of the pilot , RFP for rest of the area of TPSODL will be floated for which separate bids will be invited.
55	Annexure 6 Field Survey Compliance		Do we have to consider the survey pricing only for the Pilot Area or for the entire TPSODL area of interest? Kindly confirm		For this RFP ,Scope of survey and mapping is limited to 'Berhampur' town . Subsequently based on learning of the pilot , RFP for rest of the area of TPSODL will be floated for which separate bids will be invited.

No.	Query Related to	Description as per Bid Document	Remarks - Query / Clarification 1	Remarks - Query / Clarification 2	Response from TPSODL
56	Annexure 6 Field Survey Compliance	Pilot Area Details:	Do we have to develop any base map on the pilot town, if yes who will provide the satellite imagery for development of base map.		Digitization , survey , importing base map in EGIS software and demonstrating application on base map is part of this RFP. For the pilot area, TPSODL has initiated procurement of Satellite image. However, delay is expected due to government approvals. If TPSODL is not able to arrange Satellite image then vendor has to find alternate source to create base map. Vendor can provide quote for arranging satellite image. While placing the PO , TPSODL will communicate whether vendor is required to buy satellite image or TPSODL will provide it.
57	Annexure 6 Field Survey Compliance	Total no of 11kv feeders	Please provide a tentative quantity in line km for Survey & mapping of 11kv feeders , we also request to segregate the exiting line item in the price bid and include separate line item in the price bid with minimum quantity in cqt km to provide an estimates required		Please refer new annexure , Annexure 6-1 Committed Network Quantity for field survey.Vendor to provide unit rate also
58	Annexure 6 Field Survey Compliance	Total no of 33kv feeders	Please provide a tentative quantity in line km for Survey & mapping of 33kv feeders , we also request to segregate the exiting line item in the price bid and include separate line item in the price bid with minimum quantity in cqt km to provide an estimates .		Please refer new annexure , Annexure 6-1 Committed Network Quantity for field survey.Vendor to provide unit rate also
59	Annexure 6 Field Survey Compliance	Consumer	Please provide information on type of consumer (how much percentage is the HT consumer)		Most of the consumers are domestic . Segregation of consumer can be given to selected party.
60	Annexure 6 Field Survey Compliance	Asset Sequence generation and painting	Please provide a tentative quantity of network asset feeders , we also request to include separate line item in the price bid with minimum quantity in cqt km to provide an estimates.		Please refer new annexure , Annexure 6-1 Committed Network Quantity for field survey
61	Annexure 6 Field Survey Compliance	Asset Sequence generation and painting	Please provide specification for asset painting .		Number will be Hand painted. Dimesions are 8 x 20 cm for Rail Pole and 12 x 20 cm for other assets. Assets to be covered for painting are Pole, Transformer, CB ,LTP , 33/11 Substations . Reference Document which is being used for painting assets in TPCODL is provided. On similar line, with necessary changes, a new asset painting document will be created for TPSODL in consultation with the selected vendor
62	Annexure 6 Field Survey Compliance	All spatial features captured shall be within +/-1 m accuracy. TATA POWER shall decide the procedures to check the positional accuracy of the spatial features in delivered data through its sources and wherever part or whole of the data is not found meeting the said criteria shall be rejected and the successful bidder will need to redo the same with no extra time	As per the specification it is required to do DGPS Survey to achieve +/- 1 m accuracy.		Vendor can use any proven method to achieve accuracy of +/- 1m. Survey methodology need to be approved by TPSODL
63	Annexure 6 Field Survey Compliance	Field Survey - Network assets - Underground survey.	Is there any scope of Underground Survey, If yes do we have to use GPR		Most of the electrical network is overhead . However, for any underground electrical network , location and attribute data will be provided by TPSODL
64	Annexure 6 Field Survey Compliance	Field Survey - Network assets - Underground survey.	Please provide the quantity details for underground survey ? If Any.		Most of the electrical network is overhead . However, for any underground electrical network , location and attribute data will be provided by TPSODL
65	Annexure 6 Field Survey Compliance	Final Data delivery	Please provide the final data delivery format for use in EGIS .		Implementing agency has to implement the project on turnkey basis . Defining approach and methodology for implementation , field survey , QC etc.. has to be done by implementation agency as per industry best practice .
66	Annexure 6 Field Survey Compliance	Field Survey - Network assets - Underground survey.	For this RFP is the scope of survey & mapping is limited to only "Pilot Town " Berhampur. Please clarify		For this RFP ,Scope of survey and mapping is limited to 'Berhampur' town . Subsequently based on learning of the pilot , RFP for rest of the area of TPSODL will be floated for which separate bids will be invited.
67	Annexure 7 Performance Compliance	Performance Compliance – Annexure -7	Since this measure depends on several parameters such as hardware, Network load, Firewall etc. Most of which is not in our control, will there be a way arrived at to measure this for the application module? Please clarify		No change Required
68	Annexure 7 Performance Compliance	Performance Compliance – Annexure -7 on page 54	Since this measure depends on several parameters such as hardware, Network load, Firewall etc. Most of which is not in our control, will there be a way arrived at to measure this for the application module? Please clarify.		No change Required
69	Annexure 8 Licensing compliance	Annexure -8	Licensing compliance 3 Mobile users Mobile licenses Enterprise	It is understood that mobile users and web users are served by same set of licenses. Globally Users entitled to Web Application access are entitled to Mobile workflows as well in same authorisation.	Licensing can be proposed by vendor which will match our requirement. Concurrent licenses will be preferred Mobile application to match the requirement of RFP and SRS.Also, mobile application is expected to work in offline mode.

No.	Query Related to	Description as per Bid Document	Remarks - Query / Clarification 1	Remarks - Query / Clarification 2	Response from TPSODL
70	Annexure 8 Licensing compliance	Annexure -8	Licensing compliance Integration Services Server Side Enterprise	Typically integration services are part of Enterprise products. It is understood that compliance can be assured by means of enterprise GIS product license itself.	Licensing can be proposed by vendor which will match our requirement as per the scope of RFP.
71	Annexure 8 Licensing compliance	Mobile Application Requirements: Shall be compatible with all mobile sizes and shall work in online and offline mode	Kindly confirm that bidder can propose a one-page responsive web application meeting the Mobile Application Requirements that can be utilized on the mobile browser without any need of installation on the device.		Mobile application to match the requirement of RFP and SRS. Also, mobile application is expected to work in offline mode.
72	Annexure 8 Licensing compliance	Desktop Edit Users	We understand that Desktop Edit users will be fixed set of users(20) that shall be working for data editing purpose. Pl. confirm.		Concurrent licenses required
73	Annexure 8 Licensing compliance	Mobile Licensing	Pl. share the expected number of Mobile users for the purpose of sizing the hardware and the related software licenses		Mobile licensing policy shall remain as enterprise to pan TPSODL area. For hardware sizing , 100 nos. of concurrent users may be considered.
74	Annexure 8 Licensing compliance	Annexure-8 : License compliance	Whether 200 concurrent web user includes field mobile user as well. If not, then please share us the number of mobile user needs to be considered.		Mobile licensing policy shall remain as enterprise to pan TPSODL area.
75	Annexure 8 Licensing compliance	Generic	We understand that bidder has to provide all the GIS software licenses for all the environment like dev, testing, production etc. for both DC and production for DR. Please confirm.		Yes
76	Annexure 8 Licensing compliance	Desktop Edit Users	We understand that Desktop Edit users will be fixed set of users(20) that shall be working for data editing purpose. Pl. confirm.		Concurrent licenses required
77	Annexure 9 Documentation, User Manual and Training Compliance	Training - User & Admin	We understand that the bidder is required to train 1 batch of up to 10 users for each user/admin training. Pl. confirm.		User Training 1. Product and solution training: Two nos. of training with 10 nos. of participants in each training. First training for core team will be arranged before or during or after SRS. Time of second training will be decided by TPSODL. Certified Training shall be on conducted using course material and as per duration recommended by OEM Focussed group training for capability building and sustaining the solution deployment 2. System and DBA : Two nos. of training with 4 nos. of participants in each training. First training for core team and System Administrator will be arranged before or during or after SRS. Time of second training will be decided by TPSODL. Certified Training shall be on conducted using course material and as per duration recommended by OEM 3. Certified Training on programming and development language: Nos. of participants 10 nos. Certified Training shall be on conducted using course material and as per duration recommended by OEM Suitable participants will be arranged for this training.
78	Annexure 9 Documentation, User Manual and Training Compliance	Training - User & Admin	We understand that the bidder is required to train 1 batch of up to 10 users for each user/admin training. Pl. confirm.		User Training 1. Product and solution training: Two nos. of training with 10 nos. of participants in each training. First training for core team will be arranged before or during or after SRS. Time of second training will be decided by TPSODL. Certified Training shall be on conducted using course material and as per duration recommended by OEM Focussed group training for capability building and sustaining the solution deployment 2. System and DBA : Two nos. of training with 4 nos. of participants in each training. First training for core team and System Administrator will be arranged before or during or after SRS. Time of second training will be decided by TPSODL. Certified Training shall be on conducted using course material and as per duration recommended by OEM 3. Certified Training on programming and development language: Nos. of participants 10 nos. Certified Training shall be on conducted using course material and as per duration recommended by OEM Suitable participants will be arranged for this training.
79	Bidding Process	Procedure to Participate in Tender	Also it may be strictly noted that once date of "Last date and time for Payment of Tender Participation Fee" is lapsed no Bidder will be sent link from TPSODL E-Tender System (Ariba). Without this link vendor will not be able to participate in the tender. Any last moment request to participate in tender will not be entertained.	Can we expect an extension in the last date for tender application and payment of participation fee?	Will be communicated separately , or please get in touch with people whose email ids are mentioned in RFP

No.	Query Related to	Description as per Bid Document	Remarks - Query / Clarification 1	Remarks - Query / Clarification 2	Response from TPSODL
80	General Query	All source codes of customization and of fully customized utility, engine, tool, routine, project documentation, etc will remain property of TPSODL. The right includes modification, enhancement, reuse for other business purpose. The business logics built on out of box functionality will also remain the property of TPSODL re-using, publishing, presenting at different internal and external forum	Licensor shall retain exclusive rights to all intellectual property rights in its Software and Documentation, (including copyrights, trademarks, patents and trade secrets), schematics, logic diagrams, and manufacturing processes, and to all modifications thereto, whether funded by Licensee or otherwise. Licensor shall retain ownership in and does not convey, nor does Licensee or Licensee's final customer obtain any right, title, or interest in, Software, specifications or data furnished or developed by Licensor either prior to or in the performance of Licensee's order. No schematics or source code shall be furnished, unless pursuant to a separate license as agreed by Licensor. Subject to the performance of its obligations hereunder, Licensee shall have a license to use Licensor's intellectual property rights only as they are embodied in the Software and Documentation and for no other purpose. Licensee shall not modify or reverse engineer the Software and Documentation. All Software, Documentation, and Third-Party Software are licensed in object code format only and not sold. Licensee agrees that Licensor and its suppliers own all proprietary rights, including, but not limited to any patent, copyright, trade secret, trademark, and other proprietary rights, in and to Software, Documentation, and Third-Party Software, including any Derivative Works thereof regardless of the source of development, including but not limited to cases where Licensee engages a third party to perform such development if permission is granted by Licensor pursuant to Section 2.2 above and any corrections, bug		No Change
81	General Query	Generic	Bidder is considering in Onsite-offsite delivery model. Please confirm on this.		Entire Survey team has to be on-site. Requirement identification stage need to be completed onsite only. For other stage of the project, Minimum one Project Manager, software development coordinator, functional Co-ordinator and 2 nos. of data digitizers need to be onsite. Based on the project need, TPSODL may ask for
82	IT	Annexure-2: General Features of the solution point 1.03 The solution shall provide an integration toolkit and have standard, published API sets to allow the integration with ERP for Asset Replication and work management business workflow integration.	Does there an existing ERP solution at TPSODL which needs to be integrated with GIS? We request TPSODL to clarify and provide Make and Version.		ERP is under final stages of rollout. Version is SAP S/4 HANA
83	IT	Annexure-2: General Features of the solution point 2.2 on page 25: The system must be CIM compliant and provide out of box support for CIM based integration with Advanced Distribution Management Systems / SCADA / DMS / OMS	Does there any ADMS system that is already implemented or is it just the support flexibility for the future implementation? We request TPSODL to clarify.		TPSODL is going for aggressive technology transformation roadmap. Many initiatives would parallel be implemented along with GIS. Due to this, bidder need to provision integration of various systems during implementation and in FMS period. For more clarity, please refer annexure 12 of RFP.
84	IT	Annexure-2 Technical Specification - Point 10 Technology Platform High Availability Cluster should be supported	We understand that the High Availability Cluster is required to be supported for the critical components of the solution i.e. Database and Desktop Users. We request TPSODL to confirm.		Yes HA is required to be supported
85	IT	Annexure-3 General System Requirements Within first two months of Project Kick Off, Implementation agency shall finalize detailed BoQ, Data Centre architecture, specifications and deployment plan of production environment Hardware and related components.	As per our understanding bidder is required to propose the hardware sizing for the production & development environment. We understand that the procurement and deployment of Hardware Infrastructure is in customer scope		1. Please refer point no. 2 in Annexure-3 for detail. Vendor has to provide Development and testing environment which includes hardware. These servers should have minimum 5 years of warranty and would be placed in TPSODL Data Centre at Berhampur. Quote for the same need to be mentioned in Annexure-12, 'Time Schedule, Payment Terms and Penalty Clause' under point 'Readiness of GIS development environment at utilities premise. 2. Production Hardware with required OS, antivirus, firewall etc. will be provided by TPSODL 3. GIS Software along with required database licenses needs to be provided by the bidder. Any other proprietary software, hardware or licenses has to be provided by the bidder only
86	IT	Annexure 4- Integrated Business Processes: Single Sign-On	Does there any existing Single Sign-On system existing at TPSODL that needs to be integrated with proposed solution?		To be integrated with either Active Directory or SAP Single SignOn is available at TPSODL

No.	Query Related to	Description as per Bid Document	Remarks - Query / Clarification 1	Remarks - Query / Clarification 2	Response from TPSODL
87	IT	Additional Query	We understand Bidder shall recommend the Hardware specifications and actual procurement of Hardware shall be arranged by Customer as same is not in scope of this tender.		1. Please refer point no. 2 in Annexure-3 for detail. Vendor has to provide Development and testing environment which includes hardware. These servers should have minimum 5 years of warranty and would be placed in TPSODL Data Centre at Berhampur. Quote for the same need to be mentioned in Annexure-12, 'Time Schedule, Payment Terms and Penalty Clause' under point 'Readiness of GIS development environment at utilities premise. 2. Production Hardware with required OS, antivirus, firewall etc. will be provided by TPSODL. 3. GIS Software along with required database licenses needs to be provided by the bidder. Any other proprietary software, hardware or licenses has to be provided by the bidder only
88	IT	Annex 3 point 2	We understand that TPSODL is expecting on-premise (not cloud based) solution. Please confirm.		Yes solution should be on premise
89	IT	Generic	Bidder has to consider to build and set-up GIS development environment to be hosted at DC including hardware and software. Apart from GIS software Remaining all environments including productions will be provided by TPSODL as per solution requirement. Please confirm.		GIS Software along with required database licenses needs to be provided by the bidder. Any other proprietary software, hardware or licenses has to be provided by the bidder only. Production Hardware with required OS, antivirus, firewall etc. will be provided by TPSODL.
90	IT	Annex 2 : Technical specification compliance point#11	We understand that secure access and authentication of the web application should support Windows Active Directory and LDAP. Also we are assuming that Web application will be accessed both over internet and Intranet. Please clarify.		Your understanding is correct
91	IT	The scope includes supply, installation, customization, integration and commissioning of Enterprise GIS system (hereinafter called EGIS) along with all necessary IT infrastructure (software only).	Pls confirm that whether any hardware supply is in Scope of delivery.		1. Please refer point no. 2 in Annexure-3 for detail. Vendor has to provide Development and testing environment which includes hardware. These servers should have minimum 5 years of warranty and would be placed in TPSODL Data Centre at Berhampur. Quote for the same need to be mentioned in Annexure-12, 'Time Schedule, Payment Terms and Penalty Clause' under point 'Readiness of GIS development environment at utilities premise. 2. Production Hardware with required OS, antivirus, firewall etc. will be provided by TPSODL. 3. GIS Software along with required database licenses needs to be provided by the bidder. Any other proprietary software, hardware or licenses has to be provided by the bidder only
92	IT	Optimum sized development servers with required OS, DB, antivirus and other required components to be loaded on the server enough to carry out project related 'development and testing' should be provided by vendor as a part of offering. These servers should have minimum 5 years of warranty and would be placed in TPSODL Data Centre at Berhampur.	We understand that scope of supply includes hardware server and all the software required to be installed in this server. Other components like rack, networking etc. is not in the scope. Please confirm on our understanding.		Rack ,networking will be provided by TPSODL
93	IT	Solution's compatibility for "On-premise" and "cloud deployment"	We understand that GIS product should be compatible with both on-prem and on cloud but current scope of implementation and support is on-premise only. Please confirm.		Yes
94	IT	Project gets initiated in ERP with status "New"	What is the ERP software TPSODL having? Also what is the existing CRM system ?		ERP: SAP S/4 HANA. CRM: Fluent grid
95	IT	validate the network extension in a Network Analysis application like Cymdist.	Does TPSODL already having CYMDIST?		No
96	IT	Broad scope of work - Deployment of an integrated solution for efficient and effective functioning of business processes related but not limited to - Network planning, Project execution (as-built updates), Operations Management, Commercial Management, Asset management, Customer management, enabling business analytics and GIS System Administration as per the requirements laid out under section, 'Annexure-4: Integrated Business Process Requirement Compliance'	We assume that all the modules like SSO, CRM, ERP, Energy Audit, SCADA, FFA,Cymdist, ADMS and outage management (to be integrated with EGIS) as given in RFP already implemented in TPSODL. Also we understand these module supports industry standard integration protocols like SOA (REST, SOAP etc). Please clarify. Please share the technology stack of SSO, CRM, ERP, Energy Audit, SCADA, FFA, Cymdist, ADMS and outage management software that TPSODL is having?		Currently there is no major IT system in TPSODL. SAP ERP S/4 HANA and Fluent grid CRM & MBC system is in advanced stages of implementation and support SOA. All other technologies that are being procured would be state of art and most of these should support SOA integration. However bidder to consider required effort of integration as per its experience.

No.	Query Related to	Description as per Bid Document	Remarks - Query / Clarification 1	Remarks - Query / Clarification 2	Response from TPSODL
97	IT	The GIS database shall have the provision of deployment on standard RDBMS (Oracle, SQL Server etc.) - Bidder to provide complete list of supported RDBMS	We understand as a part of solution bidder has to propose the required RDBMS. But is the supply of RDBMS is in the bidder's scope. Please confirm.		GIS Software along with required database licenses needs to be provided by the bidder. Any other proprietary software, hardware or licenses has to be provided by the bidder only. Standard Hardware with required OS, antivirus, firewall etc. will be provided by TPSODL.
98	IT	Generic	Is there any middleware planned to integrate with GIS and other enterprise systems like MBC, ERP, CRM etc.		SAP-Process orchestration (PO) middleware available
99	IT	Appendix-2: General Features of the solution point The solution shall provide an integration toolkit and have standard, published API sets to allow the integration with ERP for Asset Replication and work management business workflow integration.	Is there an existing ERP solution at TPSODL which needs to be integrated with GIS? Please clarify.		ERP: SAP S/4 HANA.
100	IT	Appendix-2: General Features of the solution point 2.2 : The system must be CIM compliant and provide out of box support for CIM based integration with Advanced Distribution Management Systems / SCADA / DMS / OMS	Is there any ADMS system that is already implemented or is it just the support flexibility for the future implementation? Please clarify.		TPSODL is going for aggressive technology transformation roadmap. Many initiatives would parallel be implemented along with GIS. Due to this, bidder need to provision integration of various systems during implementation and in FMS period. For more clarity, please refer annexure 12 of RFP.
101	IT	Annexure-2 Technical Specification - Point 10 Technology Platform High Availability Cluster should be supported	We understand that the High Availability Cluster is required to be supported for the critical components of the solution i.e. Database and Desktop Users. Pl. confirm.		Yes HA is to be supported
102	IT	The scope includes supply, installation, customization, integration and commissioning of Enterprise GIS system (hereinafter called EGIS) along with all necessary IT infrastructure (software only).	Please elaborate on the IT infrastructure work in scope of this RFP.		1. Please refer point no. 2 in Annexure-3 for detail. Vendor has to provide Development and testing environment which includes hardware. These servers should have minimum 5 years of warranty and would be placed in TPSODL Data Centre at Berhampur. Quote for the same need to be mentioned in Annexure-12, 'Time Schedule, Payment Terms and Penalty Clause' under point 'Readiness of GIS development environment at utilities premise. 2. Production Hardware with required OS, antivirus, firewall etc. will be provided by TPSODL. 3. GIS Software along with required database licenses needs to be provided by the bidder. Any other proprietary software, hardware or licenses has to be provided by the bidder only
103	IT	Installation, Commissioning of GIS System and other work as per scope of work	Are installation, commissioning included in the required infrastructure (server, OS, Virtualization, DB, Storage etc.) components? If yes, who will provide the infrastructure and own them?		1. Please refer point no. 2 in Annexure-3 for detail. Vendor has to provide Development and testing environment which includes hardware. These servers should have minimum 5 years of warranty and would be placed in TPSODL Data Centre at Berhampur. Quote for the same need to be mentioned in Annexure-12, 'Time Schedule, Payment Terms and Penalty Clause' under point 'Readiness of GIS development environment at utilities premise. 2. Production Hardware with required OS, antivirus, firewall etc. will be provided by TPSODL. 3. GIS Software along with required database licenses needs to be provided by the bidder. Any other proprietary software, hardware or licenses has to be provided by the bidder only
104	IT	System Requirement Compliance General Requirements			
105	IT	1. The overall Solution Architecture including HA and DR	Is this platform / infrastructure Architecture design is also in scope?		Yes. Platform / infrastructure Architecture design is also in scope
106	IT	4. Hardware requirement specifications as per the expected performance requirements and user base	Hardware Sizing is in scope?		Yes. Hardware Sizing is in scope

No.	Query Related to	Description as per Bid Document	Remarks - Query / Clarification 1	Remarks - Query / Clarification 2	Response from TPSODL
107	IT	Optimum sized development servers with required OS, DB, antivirus and other required components to be loaded on the server enough to carry out project related 'development and testing' should be provided by vendor as a part of offering. These servers should have minimum 5 years of warranty and would be placed in TPSODL Data Centre at Berhampur	Is deployment of server hardware, OS, DB and related system software is in scope? Who will procure and own the hardware?		1. Please refer point no. 2 in Annexure-3 for detail. Vendor has to provide Development and testing environment which includes hardware. These servers should have minimum 5 years of warranty and would be placed in TPSODL Data Centre at Berhampur. Quote for the same need to be mentioned in Annexure-12, 'Time Schedule, Payment Terms and Penalty Clause' under point 'Readiness of GIS development environment at utilities premise. 2. Production Hardware with required OS, antivirus, firewall etc. will be provided by TPSODL. 3. GIS Software along with required database licenses needs to be provided by the bidder. Any other proprietary software, hardware or licenses has to be provided by the bidder only 4. Either procured by TPSODL or by bidder, assets would be owned by TPSODL.
108	IT	Within first two months of Project Kick Off, Implementation agency shall finalize detailed BoQ, Data Centre architecture, specifications and deployment plan of production environment Hardware and related components	Are detailed infrastructure BOQ, BOM, DC Architecture finalization and deployment of both development and production environment in scope?		1. Please refer point no. 2 in Annexure-3 for detail. Vendor has to provide Development and testing environment which includes hardware. These servers should have minimum 5 years of warranty and would be placed in TPSODL Data Centre at Berhampur. Quote for the same need to be mentioned in Annexure-12, 'Time Schedule, Payment Terms and Penalty Clause' under point 'Readiness of GIS development environment at utilities premise. 2. Production Hardware with required OS, antivirus, firewall etc. will be provided by TPSODL. 3. GIS Software along with required database licenses needs to be provided by the bidder. Any other proprietary software, hardware or licenses has to be provided by the bidder only 4. Architecture finalization and deployment of both development and production environment in scope
109	IT	Access & Authentication - Single Sign on integration, AD	Is there existing SSO, MFA in place or do you need new solution?		To be integrated with either Active Directory or SAP Single SignOn is available at TPSODL
110	IT	Installation of new patches and updates and upgrades shall not affect the existing custom applications and their integration with other systems. Any changes require after patches updates shall be borne by bidder and may cover in AMC / Project.	Do these patching, upgrade includes OS , middleware and DB also or limited to the GIS application only?		Bidder will upgrade components that are in its scope i.e. GIS S/W and DB along with any other proprietary components. Rest of upgrade will be done by TPSODL subject to receipt of feedback from the bidder. Decision on requirement of upgrade would be of bidder only.
111	IT	System and database administration	Is only DB servers are in scope for maintenance support contract or includes other infrastructure servers as well?		Bidder will upgrade components that are in its scope i.e. GIS S/W and DB along with any other proprietary components. Rest of upgrade will be done by TPSODL subject to receipt of feedback from the bidder.
112	IT	Warranty Support/ Post Implementation Support (AMC) SLA	What are the SLA related to support of infrastructure components?		Bidder SLA would be measured only on the scope attributable to bidder
113	IT		Under whose scope supply, installation , deployment the physical and logical infrastructure including compute ,storage , OS , virtualization etc., would be?		1. Please refer point no. 2 in Annexure-3 for detail. Vendor has to provide Development and testing environment which includes hardware. These servers should have minimum 5 years of warranty and would be placed in TPSODL Data Centre at Berhampur. Quote for the same need to be mentioned in Annexure-12, 'Time Schedule, Payment Terms and Penalty Clause' under point 'Readiness of GIS development environment at utilities premise. 2. Production Hardware with required OS, antivirus, firewall etc. will be provided by TPSODL. 3. GIS Software along with required database licenses needs to be provided by the bidder. Any other proprietary software, hardware or licenses has to be provided by the bidder only
114	IT		As per RFP, we understand that the solution would be deployed On-Prem infra and No Cloud. Please confirm.		Yes solution to be deployed on-prem

No.	Query Related to	Description as per Bid Document	Remarks - Query / Clarification 1	Remarks - Query / Clarification 2	Response from TPSODL
115	IT		Would the required infrastructure be procured or the existing infrastructure and capacity be leverage? If procured who would own this assets , and what role MSP need to play		<p>1. Either procured by TPSODL or by bidder, assets would be owned by TPSODL.</p> <p>2. Development environment needs to be provided & Commissioned by the bidder. Production environment with storage, OS, virtualisation etc. would be provided and commissioned by TPSODL as per inputs of successful bidder.</p> <p>GIS Software along with required database licenses needs to be provided by the bidder. Any other proprietary software, hardware or licenses has also to be provided by the bidder only.</p> <p>During AMC period Bidder will upgrade components that are in its scope i.e. GIS S/W and DB along with any other proprietary components. Rest of upgrade will be done by TPSODL subject to receipt of feedback from the bidder. Decision on requirement of upgrade would be of bidder only.</p>
116	IT		What are the components to be included in the infrastructure support for Warranty and 5 yrs. paid support and SLA ?		<p>Bidder has to provide warranty for components provided by it i.e. development landscape, GIS software (or other associated components)</p> <p>Bidder SLA would be measured only on the scope attributable to bidder</p>
117	Qualification Criteria	Qualification Criteria	5. OEM with help of Channel partner can also participate in this tender enquiry with the following conditions:-	We understand from the NIT that the selection of the GIS product is the essence of the project and shall be very critical to the overall success of the project. Hence we suggest that the GIS and Utility network product that shall be selected be already deployed in at least 10 Electricity discom agencies across India with service facilities existing in the country for the last 15 years.	Not Required
118	Qualification Criteria	1.7 Qualification Criteria	We request TPSODL to amend the existing qualification requirement to increase the participation of proven technology solution provider and OEMs. Please refer Attachment-A		Please refer revised Qualification Criteria
119	Qualification Criteria	1.7 Qualification Criteria	S.No. 12: Each bidder/OEM shall submit bid by himself only. A bidder in joint venture / consortium shall not be allowed to participate in the Tender.	Is consortium/ joint venture not allowed to participate in the bidding? While the qualification criteria says joint venture/consortium is not allowed to participate in the tender, the Liability section (section 19.1, page 88) mentions about joint venture or consortium, bound to fulfillment of the provisions of the contract. Please clarify if a consortium/joint venture is not allowed to participate in the bidding?	Please read this clause for single entity. Consortium/Joint venture not allowed.
120	Qualification Criteria	1.7 Qualification Criteria	S.No. 12: Each bidder/OEM shall submit bid by himself only. A bidder in joint venture / consortium shall not be allowed to participate in the Tender.	We understand a full-fledged implementation of an enterprise GIS system and integration solutions for an electric utility of this magnitude essentially demands technological expertise and business excellence through integration of key players well versed in the domain, both nationally and internationally. Identifying a single firm with all mandatory experience and eligibility criteria would be difficult in the domestic scenario. Can we expect the specific clause in the qualification criteria would be revoked by TPSODL so that joint venture/consortiums can also be part of the tender process?	Consortium/Joint venture not allowed.
121	Qualification Criteria	1.7 Qualification Criteria	S.No.2: Bidder must have implemented EGIS and its integration with other enterprise systems in at least two <u>electrical distribution utilities in India</u>	Is it mandatory to have this implementation experience within the country?	No Change
122	Qualification Criteria	1.7 Qualification Criteria	S.No.2: Bidder must have implemented EGIS and its integration with other enterprise systems in at least two electrical distribution utilities in India.	Through partnerships via joint venture/consortiums, we have experience in implementation of enterprise GIS in electric utility in other parts of the world especially in the Middle East. Would you reconsider this criteria so as to allow firms with electric utility GIS implementation in other geographies but not in domestic market to participate in this tender?	No Change

No.	Query Related to	Description as per Bid Document	Remarks - Query / Clarification 1	Remarks - Query / Clarification 2	Response from TPSODL
123	Qualification Criteria	1.7 Qualification Criteria	S.No. 3: The bidder shall be private/public Company registered under Company Act 1956.	If joint venture or consortium is allowed for participating in the tender, would it still be mandatory that all participating firms in the consortium/joint venture are to be registered under Indian Companies Act?	Consortium/Joint venture not allowed.
124	Qualification Criteria	1.7 Qualification Criteria	S.No. 3: The bidder shall be private/public Company registered under Company Act 1956.	Also, can we expect a consortium headed by a foreign company (outside India) and other firms participating in the consortium which are registered with Indian Companies Act would be entitled to bid the tender?	Consortium/Joint venture not allowed.
125	Qualification Criteria	1.7 Qualification Criteria	S.No.4: The Average Annual Turnover of the prospective bidder(s) during FY 17-18, FY 18-19 and FY19-20 should be equal to or more than Rs. 100.00 Crores.	Would this be same for joint venture or consortiums as well?	Consortium/Joint venture not allowed.
126	Qualification Criteria	1.7 Qualification Criteria	S.No.4: The Average Annual Turnover of the prospective bidder(s) during FY 17-18, FY 18-19 and FY19-20 should be equal to or more than Rs. 100.00 Crores.	Can there be any relaxation on the annual turnover amount? We look forward for your positive response on this criteria, which will enable level playing field to other key players/ bidders like us to participate in the tender.	No Change
127	Qualification Criteria	1.7 Qualification Criteria	S.No.6: The bidder shall have certified resources on the proposed GIS technology	Please clarify as if it is compulsory for resources to have technical certifications earned on specific GIS technology,?	No Change
128	Qualification Criteria	1.7 Qualification Criteria	S.No.7: The bidder shall be valid ISO certified and CMMI Level 5 Company	In the event of a joint venture/consortium partnership, would it be mandatory that all participating firms must qualify with ISO and CMMI accreditations? Please elaborate.	Consortium/Joint venture not allowed.
129	Qualification Criteria			For instance, we are an authorized silver partner of OEM in India. Would that be sufficient to meet this criteria?	No Change
130	Qualification Criteria			For joint venture/consortium engagements, please explain how would you expect this criteria to be met?	Consortium/Joint venture not allowed.
131	Qualification Criteria	Annexure 2: Technical specifications Section 1.03	The solution shall provide an integration toolkit and have standard, published API sets to allow the integration with ERP for Asset Replication and work management business workflow integration	We have project competency in synchronization of GIS with Maximo (Asset management System)	Proposed GIS solution should have been integrated with ERP in this case Maximo.
132	Qualification Criteria	Bidder must have implemented EGIS and its integration with other enterprise systems in at least two electrical distribution utilities in India.	We would request you kindly accept similar Project work in progress as eligibility criteria.		No Change
133	Qualification Criteria	b) Channel partner must have Average Annual Turnover of at least in the range of 40 Cr to 50 Cr. during FY17-18, FY18-19 & FY19-20.	We would request to revise the turnover to 10 cr.		No Change
134	Qualification Criteria	c) The channel partner must have executed at least one project on proposed version of EGIS and its integration with any ERP, CRM SCADA/DMS, SMART Meter and Planning & Analysis tool in an electric distribution utility anywhere in the world. Channel partner also must have implemented EGIS in at least two electrical distribution utilities in India.	We would request you to revise the clause to "The channel partner must have executed at least one web based project on proposed version of EGIS and its integration with any ERP, CRM SCADA/DMS, SMART Meter and Planning & Analysis tool in an electric distribution utility anywhere in the world.		No Change
135	Qualification Criteria	The bidder shall be valid ISO certified and CMMI Level 5 Company	We would request you to revise the eligibility criteria to CMMI level 3		Please refer revised Qualification Criteria
136	Qualification Criteria	The bidder must have executed at least one project on proposed version of EGIS and its integration with any ERP, CRM SCADA/DMS, SMART Meter and Planning & Analysis tool, in an electric distribution utility anywhere in the world.	We would request you kindly revise it to " The bidder must have executed at least one project on proposed version of EGIS and its integration with any ERP, CRM SCADA/DMS, SMART Meter and Planning & Analysis tool, in an electric distribution utility anywhere in the world"		No Change
137	Qualification Criteria	Successful Completion Certificates for all such projects from the concerned utility	We would request you kindly accept similar Project work in progress as eligibility criteria.		No Change

No.	Query Related to	Description as per Bid Document	Remarks - Query / Clarification 1	Remarks - Query / Clarification 2	Response from TPSODL
138	Specific Query	1.0 Event Information	General Query - Enterprise GIS	It is understood that some of the towns under TPSODL were surveyed under APDRP previously. Please clarify if existing data will be made available to the MSI? It is recommended that upcoming E-GIS should be fully compliant with the existing APDRP systems and standards for smooth integration and transition. To this effect it is requested that TPSODL provide some existing sample data or a utility data model if available and the existing solution architecture and frameworks for better assessment of scope of work.	GIS is not implemented at TPSODL. Also, no towns were surveyed for GIS mapping. So there is no existing data available for TPSODL.
139	T&C	13.0 LIQUIDATED DAMAGES For delay of each week and part thereof from the completion schedule specified in the contract, 1% of contract value corresponding to unexecuted work, provided full execution is done within 130% of the original contract time. If full contractual service/work rendered is not completed within 130% of contract time for execution, TPSODL has the right to levy LD on the entire contract value, subject to a maximum of 10% of the total contract value.	We request to change the LD to one half percent (0.5%) of value of undelivered portion of scope of work for each week or part thereof of delay in the completion of the works subject to a maximum of ten percent (10%) of order value		LD Clause shall remain as per tender enquiry.
140	T&C	20.0 FORCE MAJEURE a) Act of war (whether declared or undeclared), invasion, armed conflict or act of foreign enemy, embargo, blockade, revolution, riot, bombs, religious strife or civil commotion, etc. b) Politically motivated sabotage, or terrorism, etc. c) Action or Act of Government or Governmental agency for which remedy is beyond the control of the affected parties. d) Any act of God	We request TPSODL to include Epidemic & Pandemic as a Force Majeure condition.		Force Majeure shall remain as per GCC Clause
141	T&C	Additional Query	We request that Bidder should be entitled for Extension of Time for all the reasons attributable to Customer, Force Majeure, Suspension by Customer etc.		No Change
142	T&C	ANNEXURE - I-ACCEPTANCE FORM FOR PARTICIPATION IN REVERSE AUCTION EVENT & Section 4.9 : Technical Evaluation & Section 2.0 : Evaluation Criteria If Qualified technically, the bids will be evaluated commercially on the overall all-inclusive lowest cost basis line item wise	Pls confirm the basis of complete evaluation process, both technical and financial.		Technical evaluation means the bidder must meet complete QR. Commercial evaluation means price bid. In case of RA, shall be conducted among all technically qualified bidders. In case RA does not conduct, then price bids of technically qualified bidders shall open.

All other terms & conditions of the original tender document shall remain same.

Regards

Shubhranshu Shekhar Sahu

Mob +91 9263639730 | Web www.tpsouthernodisha.com

TP SOUTHERN ODISHA DISTRIBUTION LIMITED

(A Tata Power and Odisha Government Joint Venture)

Courtpeta | Berhampur | Ganjam | Odisha - 760 004

Note-This document does not require signature